



US007088971B2

(12) **United States Patent**  
**Burgener et al.**

(10) **Patent No.:** **US 7,088,971 B2**  
(45) **Date of Patent:** **Aug. 8, 2006**

- (54) **INTEGRATED RF FRONT END**
- (75) Inventors: **Mark L. Burgener**, San Diego, CA (US); **James S. Cable**, Del Mar, CA (US)
- (73) Assignee: **Peregrine Semiconductor Corporation**, San Diego, CA (US)
- (\* ) Notice: Subject to any disclaimer, the term of this patent is extended or adjusted under 35 U.S.C. 154(b) by 0 days.

6,308,047 B1 *	10/2001	Yamamoto et al. ....	455/73
6,380,802 B1 *	4/2002	Pehike et al. ....	330/136
6,449,465 B1 *	9/2002	Gailus et al. ....	455/126
6,509,799 B1	1/2003	Franca-Neto	
6,934,520 B1 *	8/2005	Rozsypal .....	455/127.3
2003/0032396 A1 *	2/2003	Tsuchiya et al. ....	455/127
2003/0224743 A1 *	12/2003	Okada et al. ....	455/126

(Continued)

- (21) Appl. No.: **11/158,597**
- (22) Filed: **Jun. 22, 2005**

**OTHER PUBLICATIONS**

Raab, et al., "Power Amplifiers and Transmitters for RF and Microwave", IEEE Transactions on Microwave Theory and Techniques, vol. 50, No. 3, pp. 814-826, Mar. 2002, USA.

(Continued)

- (65) **Prior Publication Data**  
US 2005/0287976 A1 Dec. 29, 2005

*Primary Examiner*—Lana Le  
(74) *Attorney, Agent, or Firm*—Jaquez & Associates; Martin J. Jaquez, Esq.; William C. Boling, Esq.

**Related U.S. Application Data**

- (63) Continuation-in-part of application No. 10/875,405, filed on Jun. 23, 2004.
- (51) **Int. Cl.**  
**H04B 1/04** (2006.01)
- (52) **U.S. Cl.** ..... **455/127.1; 455/127.3; 455/126; 455/129; 330/10**
- (58) **Field of Classification Search** ..... 455/126, 455/127.1, 127.2, 127.3, 121, 129; 330/287, 330/10, 136, 251  
See application file for complete search history.

**ABSTRACT**

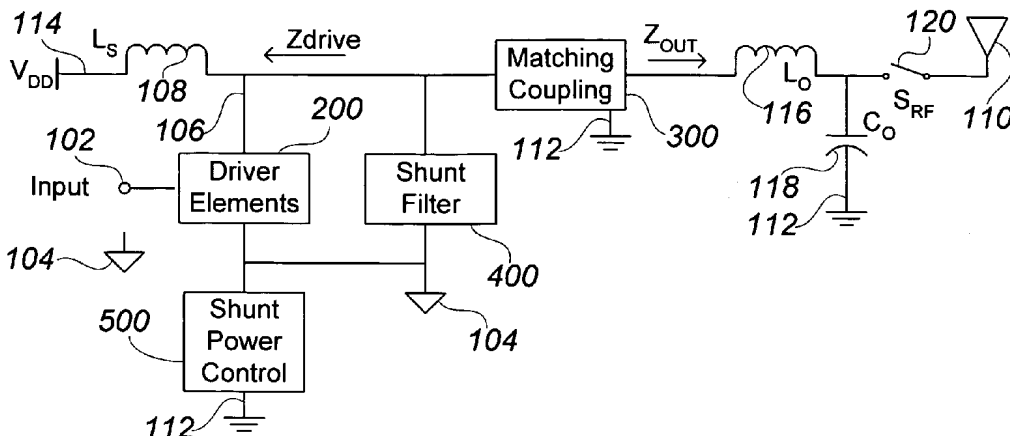
A monolithic integrated circuit (IC), and method of manufacturing same, that includes all RF front end or transceiver elements for a portable communication device, including a power amplifier (PA), a matching, coupling and filtering network, and an antenna switch to couple the conditioned PA signal to an antenna. An output signal sensor senses at least a voltage amplitude of the signal switched by the antenna switch, and signals a PA control circuit to limit PA output power in response to excessive values of sensed output. Preferred fabrication techniques include stacking multiple FETs to form switching devices. An iClass PA architecture is described that dissipatively terminates unwanted harmonics of the PA output signal. A preferred embodiment of the RF transceiver IC includes two distinct PA circuits, two distinct receive signal amplifier circuits, and a four-way antenna switch to selectably couple a single antenna connection to any one of the four circuits.

(56) **References Cited**

**U.S. PATENT DOCUMENTS**

4,079,336 A	3/1978	Gross	
4,241,316 A	12/1980	Knapp	
5,032,799 A	7/1991	Milberger et al.	
5,375,256 A *	12/1994	Yokoyama et al. ....	455/129
6,107,885 A	8/2000	Migueluez et al.	
6,191,653 B1 *	2/2001	Camp et al. ....	330/10
6,239,657 B1	5/2001	Bauer	
6,297,696 B1 *	10/2001	Abdollahian et al. ....	455/126

**16 Claims, 7 Drawing Sheets**



U.S. PATENT DOCUMENTS

2004/0121745 A1 6/2004 Meck

OTHER PUBLICATIONS

Ueda, et al., "A 5Ghz-Band On-Chip Matching CMOS MMIC Front-End", 11th GAAS Symposium—Munich 2003, pp. 101-104, Germany.

Nelson Pass, Pass Labs, "Cascode Amp Design", Audio Electronics, pp. 1-4, Mar. 1978.

Lester F. Eastman, P.I., "High Power, Broadband, Linear, Solid State Amplifier", 16th Quaterly Rep. under MURI Contract No. N00014-96-1-1223 for period Jun. 1, 2000-Aug. 31, 2000, Sep. 2000, pp. 1-8.

Jeon, et al., "A New "Active" Predistorter with High Gain Using Cascode-FET Structures", IEEE Radio Frequency Integrated Circuits Symposium, 2002, pp. 253-256.

Hsu, et al., "Comparison of Conventional and Thermally-Stable Cascode (TSC) AlGaAs/GaAs HBTs for Microwave Power Applications", Jnl of Solid-State Electronics, V. 43, Sep. 1999, 2 pgs.

Kim, et al., "High-Performance V-Band Cascode HEMT Mixer and Downconverter Module", IEEE Transactions on

Microwave Theory and Techniques, vol. 51, No. 3, pp. 805-810, Mar. 2003.

Mishra, et al., "High Power Broadband Amplifiers for 1-18 GHz Naval Radar" University of California, Santa Barbara, pp. 1-9, Jul. 1, 1998.

Perraud, et al., "A Direct-Conversion CMOS Transceiver for the 802.11a/b/g WLAN Standard Utilizing a Cartesian Feedback Transmitter", IEEE Journal of Solid-State Circuits, vol. 39, No. 12, Dec. 2004, pp. 2226-2238.

Rohde, et al., "Optic/Millimeter-Wave Converter for 60 Ghz Radio-Over-Fiber Systems", Fraunhofer-Institut für Angewandte Festkörperphysik Freiburg i. Br., Apr. 1997, pp. 1-5.

Darabi, et al. "A Dual-Mode 801.11b/Bluetooth Radio in 0.35- $\mu$ m CMOS", IEEE Journal of Solid-State Circuits, vol. 40, No. 3, Mar. 2005, pp. 698-706.

Schlechtweg, et al., "Multifunctional Integration Using HEMT Technology", Fraunhofer Institute for Applied Solid State Physics, (date uncertain, believed Mar. 1997).

\* cited by examiner

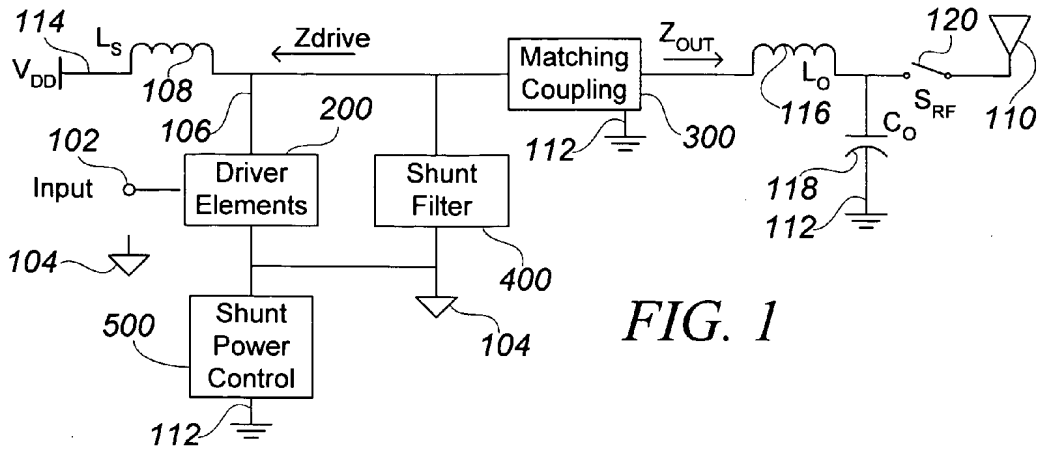


FIG. 1

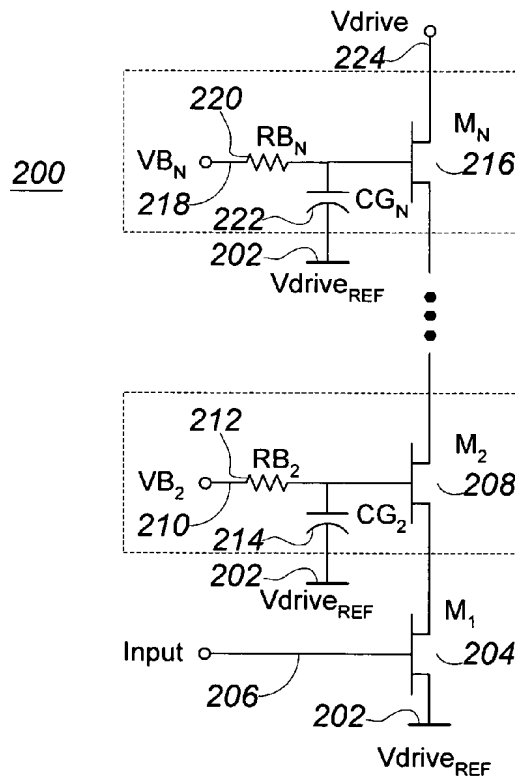


FIG. 2

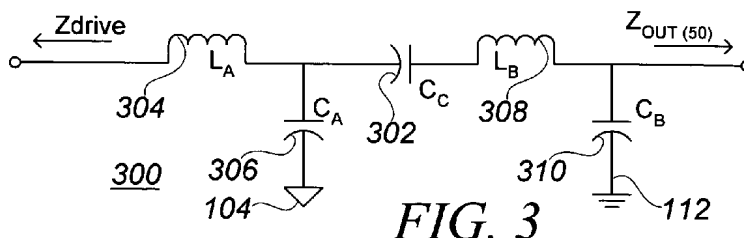


FIG. 4

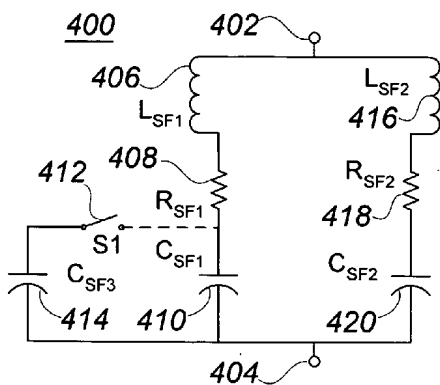


FIG. 5

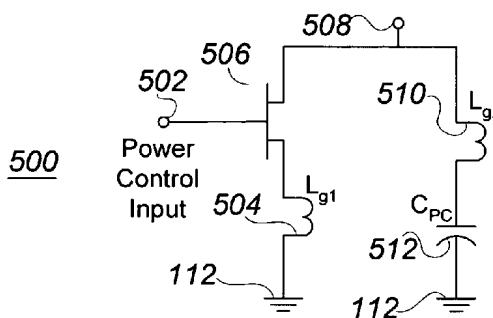
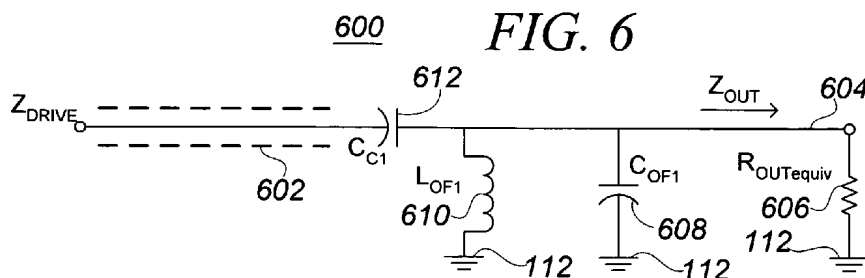


FIG. 6



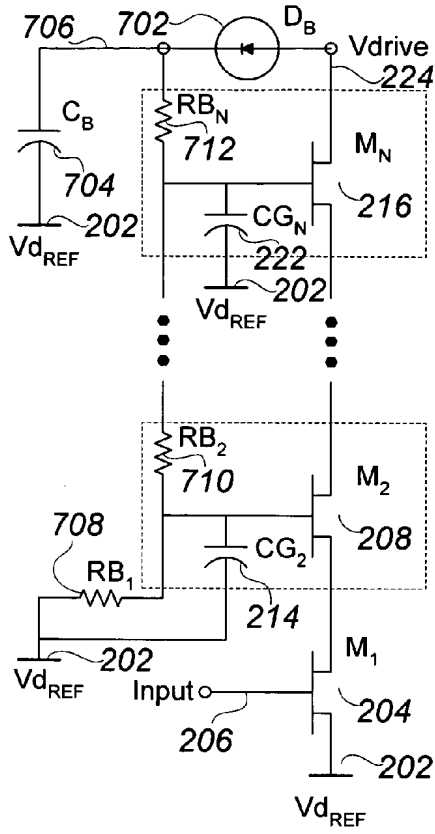


FIG. 7

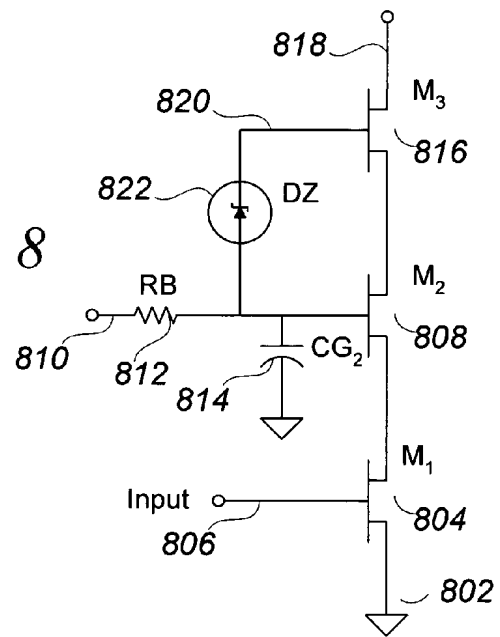


FIG. 8

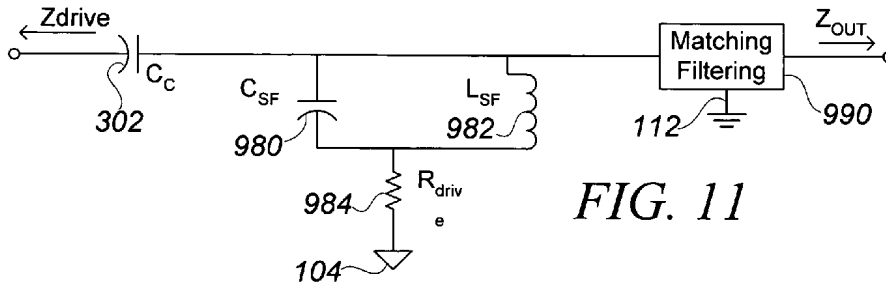
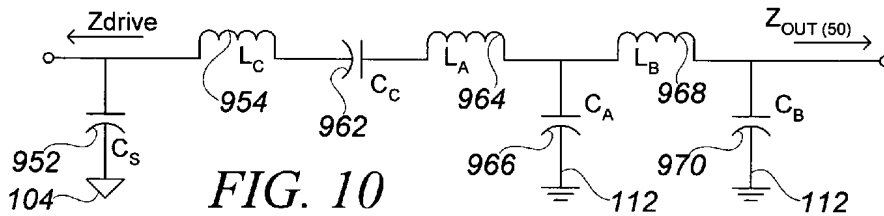
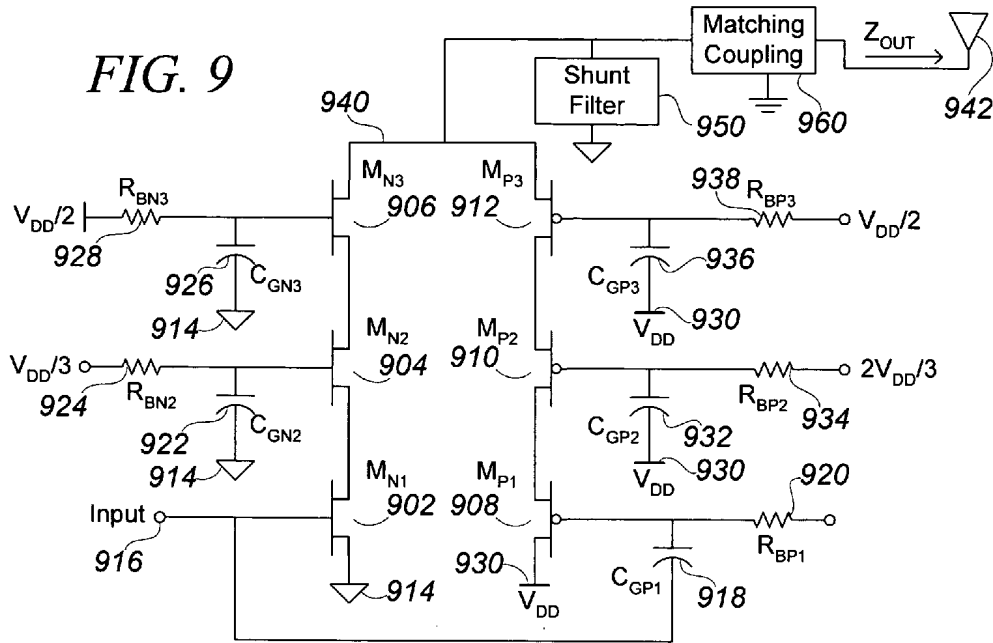
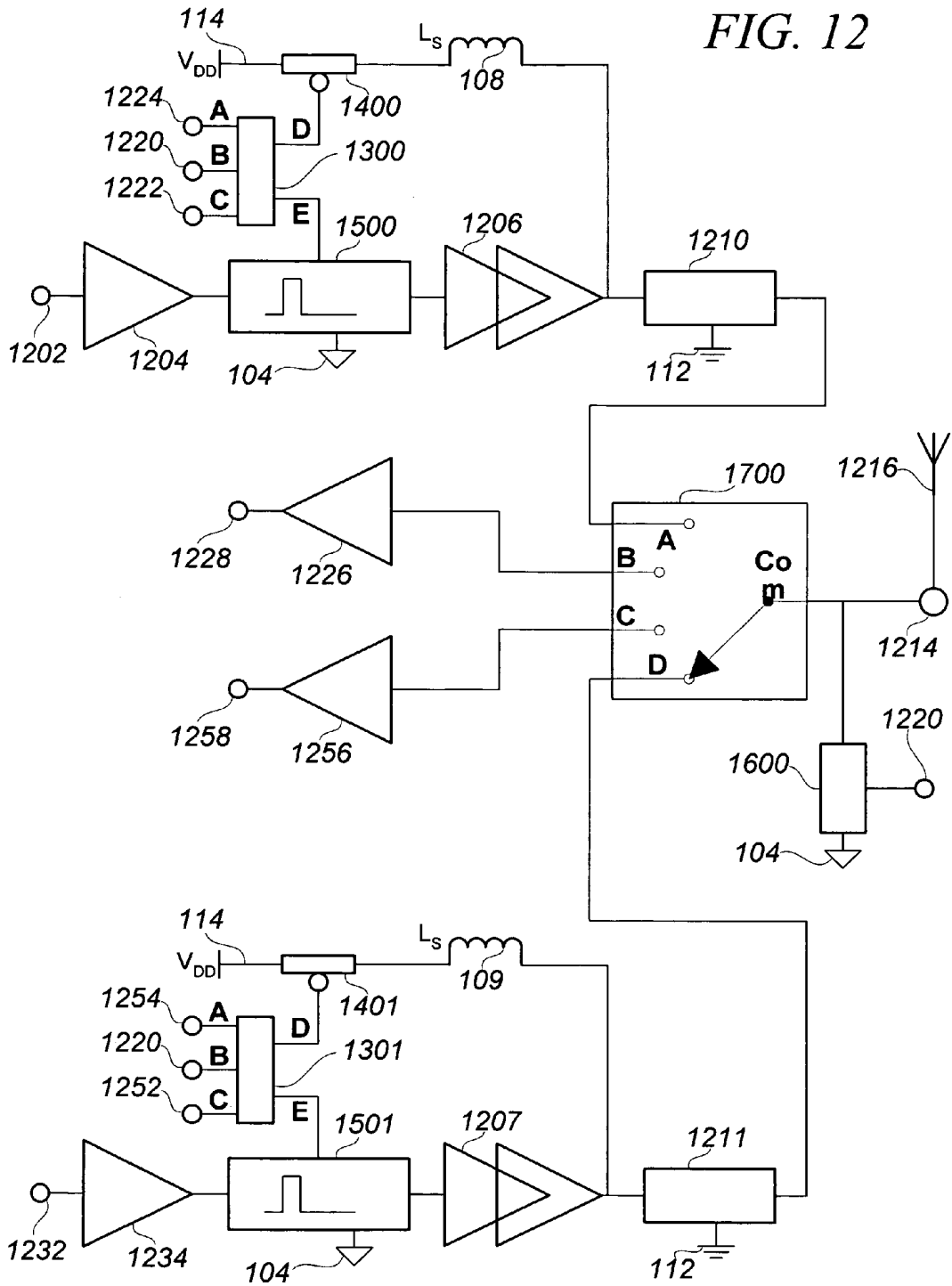


FIG. 12



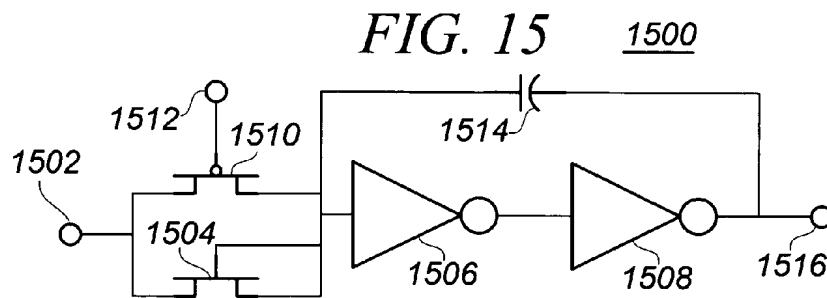
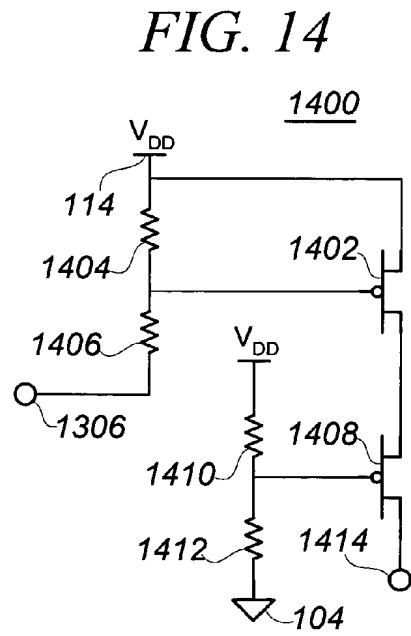
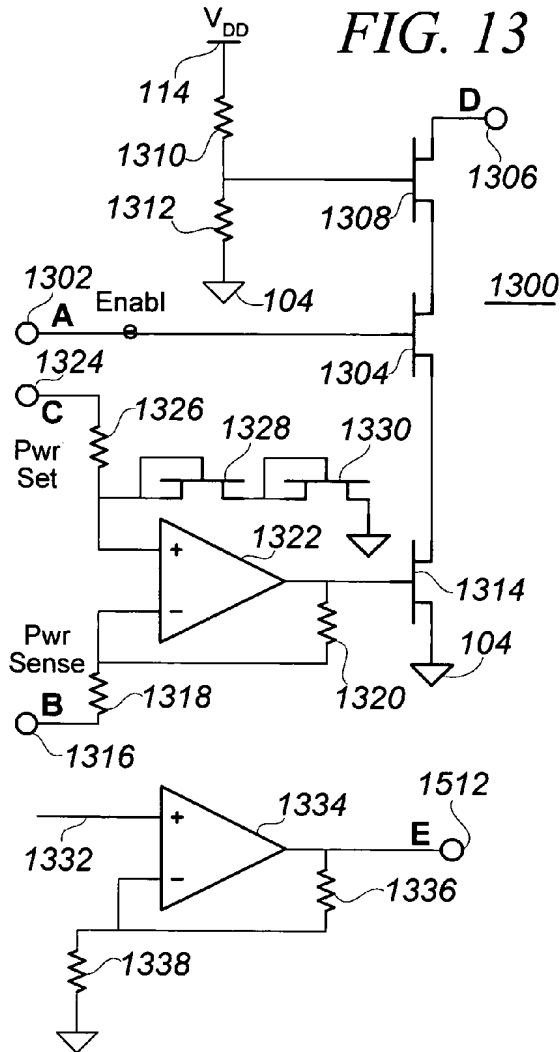




FIG. 16

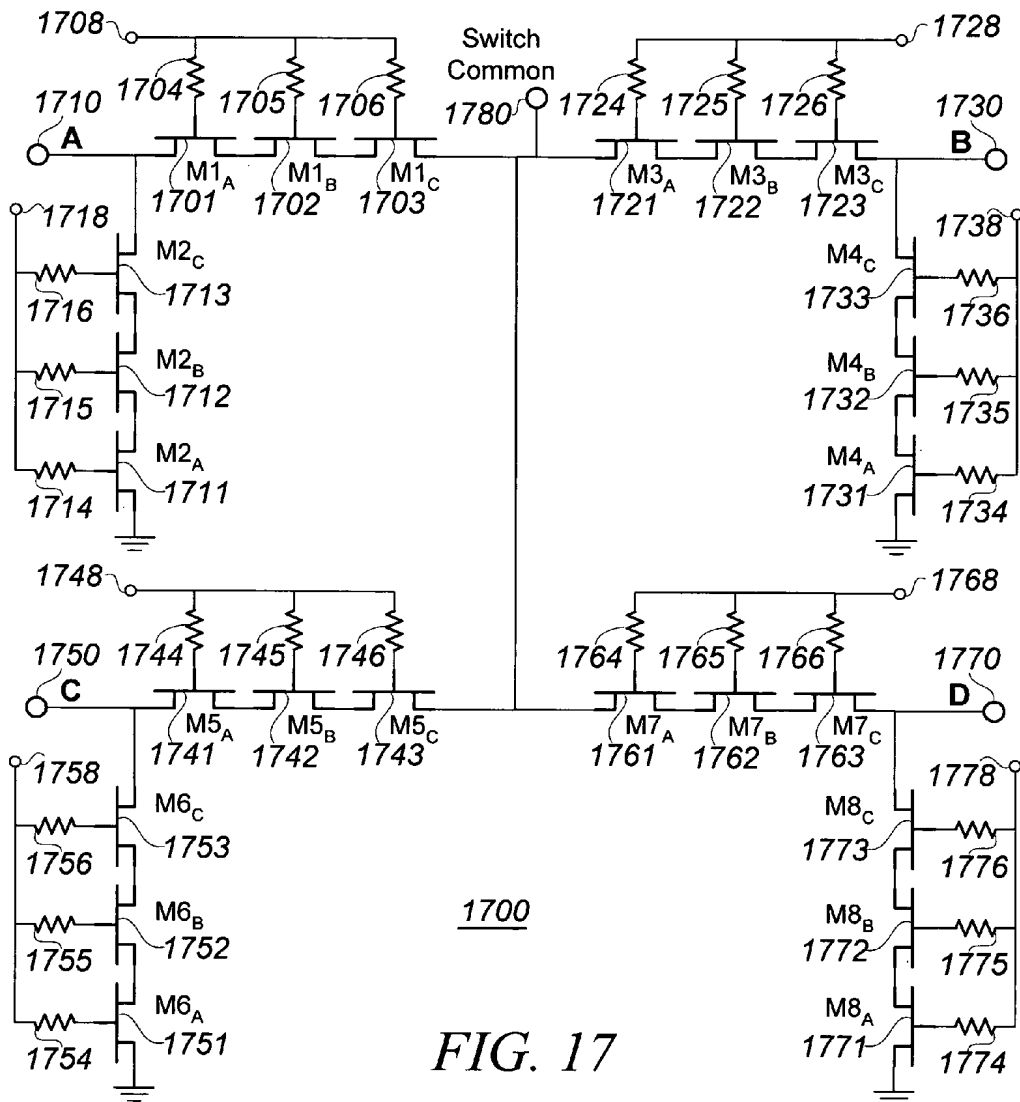
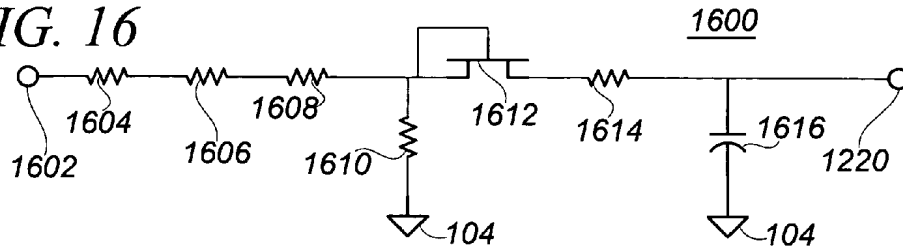


FIG. 17

## INTEGRATED RF FRONT END

This application is a continuation-in-part of co-pending and commonly assigned U.S. patent application Ser. No. 10/875,405, filed Jun. 23, 2004 and entitled "Stacked Transistor Method and Apparatus," and is related to the following commonly owned U.S. patent documents: U.S. Pat. No. 5,663,570, issued Sep. 2, 1997 and entitled "High-Frequency Wireless Communication System on a Single Ultrathin Silicon On Sapphire Chip," U.S. Pat. No. 6,804,502, issued Oct. 12, 2004 and entitled "Switch Circuit and Method of Switching Radio Frequency Signals," and copending, published U.S. patent application Ser. No. 10/658,154, filed Sep. 8, 2003 and entitled "Low Noise Charge Pump Method and Apparatus;" and the contents of each of these four U.S. patent documents is hereby incorporated in its entirety by reference.

## BACKGROUND OF THE INVENTION

## 1. Field of the Invention

This invention relates broadly to integrated electronic circuits, and more specifically to RF transceiver circuitry.

## 2. Related Art

Wireless communications devices, especially handheld devices, are undergoing sustained development. Perhaps more than any other factor, the extreme popularity of cellular mobile telephones has motivated improvements in efficiency, speed, size and cost-effectiveness for RF transmission circuits in handheld devices. Enhancing the efficiency of such circuits is highly desirable so that the size of the required batteries may be reduced, while their life is extended. Cost-effectiveness is clearly always desirable for consumer products, particularly when such products require periodic replacement to stay abreast of changes in the technology. The steady advance of functionality in cellular telephones, combined with consumer preferences for light and small devices, puts a premium on reducing the volume required for RF transmission circuits. Additionally, transmitters must meet stringent emission limits, which have been established in order to facilitate high communication density at minimal power levels.

Most wireless communication units, such as cellular telephones, comprise at least one RF transceiver. A communication device, such as a cellular telephone, may comprise a multiplicity of RF (radio frequency) front end circuits, which are of primary interest herein. RF front end circuits (or subcircuits) typically include an RF transmit signal amplifier, a Power Amplifier (PA), a matching and filtering section, an antenna switch, and may include a received signal amplifier. A complete transceiver generally also includes a low-noise amplifier for the received signal. Of these circuits, the PA subcircuit is typically the most power-consuming portion of such transmitters, and, also typically, is the source of the most significant unintended or "spurious" emissions. In order to extend battery life, to meet stringent spurious emissions standards, and to minimize the cost of these high-volume consumer items, there is a need to improve the speed and efficiency, while reducing spurious emissions and manufacturing costs, for such PA subcircuits. Due to their need to handle high power, the PA and antenna switch subcircuits consume the most integrated circuit area. Manufacturing costs for integrated circuits are strongly dependent on the amount of device area required for each circuit. Consequently, substantial reductions in the area

required for the various RF transceiver subsections will generally lead to commensurate reductions in manufacturing costs for transceiver circuits.

A range of PA topologies have been developed, each having different advantages. For example, PAs of class A, B, C, D, E and F are well known in the art. The primary amplifying devices in PAs of classes A–C are designed to operate in an "active" region of their operating range, thus intentionally conducting current while voltage is present across the device.

PAs of classes D, E and F attempt to reduce the power loss caused by such linear operation by employing amplifier devices as switches that minimize operation in active regions, rather than as linear amplifiers. However, the pulse-type outputs from such amplifiers generally require extensive filtering in order to establish a narrow-band sinusoidal output, as is typically required. While normal operation of PAs in classes D–F does not intentionally cause drive element devices to conduct while voltage is present across the devices, even switched devices consume real power due to current flowing while voltage is present during finite switching periods. Moreover, compared to drive devices in analog PAs operating at the same transmission center frequency, drive devices in class D–F switching circuits must often operate at much higher frequencies. The higher frequency signals include significant energy at undesired frequencies, and such undesired signal energies not only consume circuit power, but also require filtering to meet emission limits.

Integration of devices is generally desirable in order to improve various features of the resulting product, such as operating frequency and reliability, and may also reduce overall manufacturing costs, as well as likely reducing the volume occupied by the circuits. Field Effect Transistors (FETs) are extremely popular for both linear amplification and switching purposes in integrated circuits. However, integrated circuit (IC) FETs have a limited capability to withstand voltage between any two nodes, including gate-source, gate-drain, and drain-source node pairs. Such voltage withstand limitations may particularly impair the usefulness of IC FETs in high power switching circuits, in which inductive voltages may greatly exceed the supply voltage. As a particular example, the transmission output power capability of an RF PA is highly dependent upon the amplitude of the output voltage. One of the difficulties with existing PA technologies is that many otherwise desirably high-speed devices are fabricated using processes that tend to yield FETs having relatively low breakdown voltages. It is very desirable to solve this problem and thereby provide a wider voltage range while retaining other desirable integrated device features. Such a solution enables integration on monolithic integrated circuits of power and control features that previously required separate processing, such as PA features and RF switch features. Integration of interacting circuits that were previously discrete will enhance yield and predictability, due to the process matching that is inherent in monolithic integration.

Methods and circuits are described herein that facilitate the fabrication of all of the transceiver RF circuits of a dual-band transceiver onto a single integrated circuit, thereby solving the problems and gaining the benefits noted above. Many of the benefits are achieved by integrating even the front-end portions of transceivers that do not necessarily include dual-band operation. One or more alternatives are described for each of numerous subcircuits (or corresponding methods), and a fully integrated RF front end, or an integrated RF transceiver, may be fabricated by using any

compatible one of such alternatives for each section of the transceiver. Moreover, several of the subcircuits (or corresponding methods) that permit an integrated RF transceiver to be realized are also useful in other contexts, often independently of other RF transceiver subcircuits. Thus, various subcombinations of features described herein constitute useful inventions in their own right. Combined, various aspects of these subcombinations together achieve an integrated dual-band RF transceiver having all of the benefits noted above. Particularly notable among the independently useful subcircuits are stacked-FET RF switches and particular PA circuit topologies. Finally, the integration of certain RF transceiver subsections permits efficiencies in manufacturing without compromising safety and reliability of the final product.

### SUMMARY

A combination of methods and/or circuits is described that enables the fabrication of a self-protected monolithic integrated circuit including all of the RF front-end sections of a communications transceiver. Such self-protected RF front-end circuits particularly include those sections, from a Power Amplifier (PA) through an antenna connection, that permit efficient internal protection from overload due to an improper, missing or damaged antenna.

Several subcombinations of the self-protected monolithic integrated RF front-end circuits have independent importance. One such subcombination is an integrated stacked-FET switch. One embodiment of this subcombination is a circuit including a multiplicity of FETs in a stack having drain-source channels coupled in series to control conductivity between nodes in a circuit. A control signal is coupled to a first FET to cause changes in conductivity of the first FET, and conductivity of the remaining FETs is enslaved to the conductivity of the first FET. A voltage withstand capability across the series combination of the FET stack may be substantially equal to a sum of drain-source voltage withstand capabilities of the individual FETs of the stack. A gate of each FET other than the first FET may be capacitively coupled to a common voltage.

Another subcombination is an RF Power Amplifier (PA) that may be referred to as an integrated iClass PA. One embodiment of this subcombination includes an input controlling an RF switch whose output is coupled to a supply source via an RF choke, and which operates with a characteristic drive output impedance at an operating frequency  $f_0$ . The drive output is coupled to an antenna connection having an expected antenna impedance via a coupling circuit that matches the drive output impedance to the expected antenna impedance, and also includes a circuit that dissipatively terminates signals at one or more harmonics of the operating frequency  $f_0$ . The iClass RF PA may further include a shunt filter configured to provide local minimum impedances between the drive output and the reference at a plurality of frequencies, including an even harmonic of  $f_0$  and a non-unity odd harmonic of  $f_0$ . These minimum impedances may be approximately equal to the characteristic drive impedance.

One embodiment of the self-protected front-end circuit is an integrated circuit that includes a PA having an output amplitude regulator circuit that is controlled by an output limiting controller. The embodiment further includes an antenna switch that selectively couples an antenna connection to either the PA, via a matching and coupling circuit, or to a receive signal amplifier. The embodiment also includes an antenna connection sensor configured to sense current

through, and/or voltage at, the antenna connection, and circuitry coupling an output of the antenna connection sensor to the output limiting controller, which is configured to affect the output amplitude regulator circuit to prevent the existence of currents or voltages in excess of design limits at the antenna connection.

A related embodiment is a method of making a monolithically integrated PA with protection from excessive output values caused by high Voltage Standing Wave Ratios (VSWRs) that are due to improper antenna impedance. The embodiment includes fabricating an RF PA on an integrated circuit chip to receive a transmit signal, and providing an output power limiting circuit for the PA. It also includes fabricating coupling, matching and filtering circuits on the same integrated circuit to condition a PA output signal having a PA output impedance to a different impedance desired for a connecting element that is connected to the integrated circuit to couple the conditioned signal to an antenna. The embodiment further includes disposing an antenna switch on the integrated circuit between the PA and the connecting element whereby the connecting element may be controllably coupled to either the conditioned signal from the PA, or to a receive amplifying circuit disposed on the integrated circuit. The embodiment includes providing a sensing circuit to sense a parameter of the signal delivered to the connecting element, and a PA control circuit to reduce power of the PA output signal in response to a value of the sensed parameter that is deemed excessive.

An embodiment of a further subcombination is a method of amplifying RF signals, and includes providing a plural-FET stack to control conduction between an output drive node and a reference node to effect a characteristic impedance at an operating frequency  $f_0$ . The embodiment further includes disposing, between the output drive node and the reference node, a shunt filter configured to dissipatively terminate a harmonic frequency of  $f_0$ . The shunt filter may include local minimum impedances at an even harmonic of  $f_0$  and at a non-unity odd harmonic of  $f_0$ , and the local minimum impedances may be approximately equal to the characteristic impedance of the FET stack.

### BRIEF DESCRIPTION OF THE DRAWINGS

Embodiments of the present invention will be more readily understood by reference to the following figures, in which like reference numbers and designations indicate like elements.

FIG. 1 is a block schematic diagram representative of some types of RF power amplifier (PA) circuitry.

FIG. 2 is a generalized schematic diagram of a stacked-FET control circuit useable with a PA such as shown in FIG. 1.

FIG. 3 is a simplified schematic diagram of an impedance matching and coupling bandpass filter useable in a PA such as shown in FIG. 1.

FIG. 4 is a simplified schematic diagram of a shunt filter useable in a PA such as shown in FIG. 1.

FIG. 5 is a simplified schematic diagram of a shunt power control circuit useable in a PA such as shown in FIG. 1.

FIG. 6 is a simplified schematic diagram of an output filter for Class F operation of a PA such as shown in FIG. 1.

FIG. 7 is a schematic diagram illustrating alternative biasing features for a stacked-FET amplifying circuit.

FIG. 8 is a simplified schematic diagram illustrating an alternative method of biasing FETs of a FET stack.

FIG. 9 is a simplified schematic diagram of a Class D PA employing complementary stacked-FET drive elements.

FIG. 10 is a schematic diagram of exemplary output filtering for a Class D PA such as represented in FIG. 9.

FIG. 11 is a simplified schematic diagram of a harmonic termination shunt filter useable in a PA such as shown in FIG. 1.

FIG. 12 is a simplified schematic diagram of an integrated dual-band RF transceiver.

FIG. 13 is a schematic diagram of an exemplary PA output power supervisor for directing output power levels in the transceiver of FIG. 12.

FIG. 14 is a schematic diagram of an exemplary series output regulator for the transceiver of FIG. 12.

FIG. 15 is a schematic diagram of an exemplary pulse width controller for the transceiver of FIG. 12.

FIG. 16 is a schematic diagram of an exemplary output voltage detector for the transceiver of FIG. 12.

FIG. 17 is a schematic diagram of an exemplary dual-band antenna switch for the transceiver of FIG. 12.

## DETAILED DESCRIPTION

### I. Power Amplifier Overview

FIG. 1 is a block diagram of an RF power amplifier (PA). The illustrated RF PA is quite general, in that varying the biasing of devices in a driver elements block 200, and/or varying details of the other blocks, will permit the RF PA illustrated in FIG. 1 to operate in any of amplifier classes A, B, C, E, F, or, as described further herein, as an iClass amplifier. FIGS. 2-5 each show an exemplary circuit to implement one of the blocks shown in FIG. 1.

An input 102 is provided to the PA with respect to a circuit reference, or common, 104. The input 102 generally carries a properly biased signal at a center drive frequency,  $f_0$ . In response to the input 102, the driver elements block 200 controls conduction between a drive output node 106 and the circuit common 104. The driver elements block 200, in conjunction with current from  $V_{DD}$  via an RF choke (RFC)  $L_S$  108, provides a signal having a particular impedance  $Z_{drive}$ .  $Z_{drive}$  may vary with frequency, but will refer to the drive impedance at the center operating frequency  $f_0$ , unless otherwise indicated. A shunt filter 400 may be coupled between the drive output node 106 and the circuit common 104. Numerous different filtering arrangements may be used, some examples of which are described subsequently herein.

An antenna 110 has a characteristic impedance  $Z_{OUT}$ , generally  $50 \Omega$  (at the center frequency  $f_0$  unless otherwise indicated). A block 300 is typically required to provide matching and coupling between the drive node 106 (at  $Z_{drive}$ ) and the output at  $Z_{OUT}$ . Following the matching and coupling, an output filter section such as the combination of  $L_O$  116 and  $C_O$  118 may typically be disposed in the signal path before an RF switch,  $S_{RF}$  120, which appropriately couples the output to the antenna 110. Because the PA circuit is integrated on a semiconductor device, and the antenna 110 is typically external to the IC comprising the PA, the antenna 110 often operates with a different reference voltage, for example a chassis ground 112, which has a non-zero impedance to the circuit common 104. Accordingly, the matching-coupling block 300, as well as the filter section 116-118, has an output that is referenced to chassis ground 112.

Power control may optionally be provided. One example employs a shunt power control block 500, which may provide a voltage offset between chassis ground 112 and circuit common 104 to reduce the amplitude of signals received by the antenna 110. A series regulator circuit, such as items 1400-1401 in FIG. 12, is probably used more commonly.

The monolithically integrated RF PAs, RF front ends, and RF transceivers described herein may be fabricated to operate at relatively high frequencies of at least 900 MHz and/or 2.4 GHz, and at moderate power levels. These designs are useful for transceivers having transmit power maximums of at least 0.5 W, 1 W, or 1.5 W RMS of RF output power delivered to the antenna connection when it is properly coupled to a matched antenna.

### II. Stacked-FET Drivers

FIG. 2 is a simplified schematic diagram of a stacked-FET circuit that may be used for the driver elements block 200 in the RF PA of FIG. 1, for controlling conduction between the drive output node 106 and the circuit common 104. The stack includes two or more FETs of the same polarity, i.e., all FETs in a stack are N-channel FETs, or all are P-channel FETs, or at least all FETs in a stack operate substantially similarly as each other.

The FET stack 200 of FIG. 2 is configured to control conduction between two nodes of an integrated circuit. A terminal  $V_{drive\_REF}$  202 is connected to one of the two nodes (e.g., circuit common 104 in FIG. 1), while a terminal  $V_{drive}$  224 is connected to the other node (e.g.,  $V_{drive}$  106 in FIG. 1). For N-channel FETs (N-FETs) as illustrated in FIG. 2,  $V_{drive\_REF}$  202 will be connected to the more negative of the two nodes, for example to circuit common 104 in FIG. 1. The terminal  $V_{drive\_REF}$  202 is coupled to the source of a first FET of the stack 200,  $M_1$  204.

The FET stack 200 is controlled by means of an input signal, relative to terminal  $V_{drive\_REF}$  202, that is coupled to the gate of the signal-input FET  $M_1$  204 via an input terminal 206. The drain of  $M_1$  204 is coupled to the source of a second FET  $M_2$  208. The gate of  $M_2$  208 is provided with a bias voltage  $V_{B_2}$  210 via a bias resistor  $R_{B_2}$  212, and is decoupled to  $V_{drive\_REF}$  202 via  $CG_2$  214. In some embodiments, these two FETs are sufficient, when properly configured to divide applied voltages so as to avoid exceeding breakdown limits of either device, to serve as a conduction controlling circuit to handle increased voltages in a circuit such as a PA or a quad mixer.

In other embodiments, however, one or more additional FETs of the same polarity are connected in series with  $M_1$  204 and  $M_2$  208. Such additional FETs are represented in FIG. 2 by an Nth FET,  $M_N$  216. As for each additional FET of the stack, the source of  $M_N$  216 is coupled to the drain of the preceding FET of the stack, i.e., to the drain of FET  $M_{N-1}$  (not shown, though if  $N=3$  then  $M_{N-1}$  is  $M_2$  208). The drain of the last FET of the stack,  $M_N$  216, is coupled to the output terminal  $V_{drive}$  224. Associated with each additional FET is a biasing voltage  $V_{B_N}$  218, which is coupled to the gate of the FET via a bias impedance such as  $R_{B_N}$  220, and a capacitor  $CG_N$  222 for coupling the gate to a voltage such that the FET is enslaved to conduction by the signal-input FET (here,  $M_1$  204). As shown, enslaving may be effected by coupling the gate of each additional FET to  $V_{drive\_REF}$  202.

FET stacks with at least nine FETs in series have been fabricated or simulated, and stacks of even more series FETs are certainly possible. Note that physical circuit couplings generally include finite capacitance, inductance, and resistance. For many purposes it is preferred that the FETs of the FET stack 200 be coupled with minimal impedance in series, drain to source. However, impedance may be intentionally added to such couplings. For example, it may be desirable to more closely control a drive impedance, and to dissipate heat in specific resistive series coupling elements rather than within the FETs themselves. It may also be desirable to add

impedance between the FETs of the FET stack **200** so as to tune the conductance of the drive circuit.

### II.A. FET Stack Biasing

In some embodiments, the FETs of a FET stack may all have substantially similar voltage withstand capabilities, such as breakdown voltages  $V_{GS(br)}$ ,  $V_{GS(br)}$ , and  $V_{DG(br)}$ . For some integrated circuit fabrication processes, these values will be similar from FET to FET. Moreover, for some integrated circuit fabrication processes, the breakdown voltages  $V_{GS(br)}$ ,  $V_{GS(br)}$ , and  $V_{DG(br)}$  may be approximately equal to each other. Proper biasing will usefully ensure that none of these breakdown voltages is exceeded during normal operation of the circuit. In some embodiments, with proper biasing, voltage excursions between  $V_{drive\_REF}$  **202** and  $V_{drive}$  **224** may be permitted to approach a sum of  $V_{DS}$  breakdown voltages for each constituent FET of the stack.

Biasing and coupling the FETs of a FET stack as described below may prevent voltages from exceeding any maximum allowable node to node voltage for any FET of the stack, even when the total voltage impressed from  $V_{drive}$  **224** to  $V_{drive\_REF}$  **202** is nearly equal to the sum of the maximum allowable  $V_{DS}$  for the individual FETs of the stack. Unless otherwise noted, the maximum allowable voltage between any two nodes of the FETs (i.e.,  $V_{GS}$ ,  $V_{DS}$ , and  $V_{DG}$ ) are generally assumed to be substantially equal, both for the various nodes of each FET, and from FET to FET, which accords with an exemplary semiconductor fabrication processes. However, the skilled person may readily extend the principles set forth below to encompass situations in which these maximum allowable voltages are not equal. Also, the calculations set forth below for N-channel FET stacks may be applied to P-channel FET stacks with appropriate inversions of polarities and references.

The impedance of the gate drive of  $M_1$  may be selected according to ordinary transistor driving principles. In this exemplary embodiment,  $V_{DS(max)}$  is the same for all FETs of the stack.  $V_{DS}$  for  $M_1$  will therefore approximate  $(V_{drive} - V_{drive\_REF})/N$ . For each FET  $M_X$ , for X values from 2 to N, the effective value of each biasing resistor  $RB_X$  is selected to control a time constant,  $\tau_{GX}$ , of the gate coupling.  $\tau_{GX}$  is, approximately, the sum of effective capacitances of the gate coupling capacitor  $CG_X$  plus the parasitic gate capacitances  $C_{GPX}$ , multiplied by the series impedance to a biasing voltage. Such series impedance is typically resistive, and will be designated  $RB_{X(equiv)}$ . It may be desirable for  $\tau_{GX}$  to be much longer than the period  $1/f_0$  of the center drive frequency, preferably 5–20 times as long. Thus, a good design center goal is:

$$RB_{X(equiv)}(C_{GX} + C_{GPX}) = 10/f_0 \quad (\text{Eqn. 1})$$

With respect to  $V_{drive\_REF}$ , and for  $V_{peak}$  that is the maximum expected value of  $V_{drive}$ , one proper bias voltage value is simply a proportional portion of  $1/2$  of  $V_{peak}$ :

$$VB_X = X(V_{peak})/2N \quad (\text{Eqn. 2})$$

Thus, an example in which  $N=4$  yields:  $VB_2 = V_{peak}/4$ ,  $VB_3 = 3(V_{peak})/8$ , and  $VB_4 = V_{peak}/2$ .

### II.B. FET Stack Gate Signal Coupling

In FIGS. **2** and **7**, each gate node ( $V_{GX}$ ) is coupled via the capacitor  $C_{GX}$  to the reference voltage  $V_{drive\_REF}$ . Each gate node is also coupled to a DC bias voltage via a bias resistor. In this configuration, the effective drive voltage  $V_{GSX}$  for each FET  $M_X$  of the FET stack depends upon the voltage excursion of its source,  $V_{SX}$ , in conjunction with the impedance from the source to the gate node, and from the gate

node to AC ground. These impedances are dominated by the gate-source capacitance and the coupling capacitor  $CG_X$ . Appropriate values for  $CG_X$  may be determined as follows.

In the exemplary embodiment, the maximum voltage between each node pair of each FET is the same. The voltage excursions of the source of FET  $M_2$  must therefore not exceed the maximum  $V_{DS}$  for  $M_1$ . As such, the value of  $CG_2$  is unlimited, and desirably large, for effecting AC grounding of the gate of  $M_2$  and thereby providing the largest common-gate drive signal to  $M_2$ .  $V_{GS(max)}$  will not be exceeded for  $M_2$  if the (DC) voltage on the gate is maintained within the range of the source voltage excursions. However, if (contrary to the assumptions above) the maximum  $V_{DS1}$  exceeds the maximum  $V_{GS2}$ , then  $CG_2$  values may need to be limited in a manner analogous to that described below for  $CG_X$  for X from 2 to N.

The voltage excursion of the source of each FET  $M_X$  with respect to  $V_{drive\_REF}$ ,  $\Delta V_{SX}$ , will be equal to the drain voltage excursion for  $M_{(X-1)}$ ,  $\Delta V_{D(X-1)}$ . This voltage, presuming equal division between the various FETs, is  $X(V_{peak} - V_{min})/N$ . For  $V_{min}=0$ , this is simply  $X(V_{peak})/N$ , and  $\Delta V_{SX} = (X-1)(V_{peak})/N$ .

The parasitic gate-source capacitance  $C_{GS}$  of a FET increases, when  $V_{GS}=V_{GS(on)}$ , to  $C_{OX}$ , the oxide capacitance.  $C_{OX}$  for a particular FET  $M_X$  is designated  $C_{OXX}$ . Because  $CG_X$  is coupled to the reference voltage  $V_{drive\_REF}$ , the net  $V_{GSX}$  will be capacitively divided between  $CG_X$  and  $C_{OXX}$ . Thus, the gate-source excursion  $\Delta V_{GSX} = (\Delta V_{SX}) / (1 + C_{OXX}/C_{GSX})$ . Presuming equal maximums for  $V_{GS}$  and  $V_{DS}$ , it is desired to limit  $\Delta V_{GSX} \leq V_{peak}/N$ . Thus, substituting for  $\Delta V_{GSX}$  and  $\Delta V_{SX}$ ,  $V_{peak}/N \geq [(X-1)(V_{peak})/N] / [1 + C_{OXX}/C_{GSX}]$ . Appropriate consolidation yields:

$$C_{GX} \leq C_{OXX}/(X-2) \quad (\text{Eqn. 3})$$

For  $X=2$ ,  $C_{GX} \leq \infty$ , as expected. Also as expected, excessive values for  $C_{GX}$  will tend to cause excessive gate-source voltage excursions ( $\Delta V_{GSX}$ ). The inequality of Eqn. 3 may prevent excessive voltages between nodes of the devices. However,  $C_{GX}$  may desirably be as large as is allowable so as to provide the largest allowable drive levels without exceeding breakdown voltages. Accordingly, the inequality of equation 3 may be treated as an approximate equality.

The result set forth above may not apply when it is desired to divide voltage differently between different FETs of the stack, or when maximum gate-source voltages differ from maximum drain-source voltages. However, the skilled person will have no difficulty determining desirable values for  $C_{GX}$  for such various circumstances by calculations corresponding to those set forth above, with appropriately modified assumptions. Because the capacitors  $C_{GX}$  must sustain voltages exceeding the bias voltage of the corresponding FET  $M_X$ , a metal-insulator-metal (MIM) capacitor is a good choice. Moreover, the capacitance of both (parasitic) oxide capacitors and MIM capacitors is a direct function of geometry. Certain fabrication variables, such as lithographic variables, therefore tend to have similar effects on both types of capacitances, leaving the ratio of such capacitances relatively immune to such variables.

FIG. **3** shows an exemplary matching, coupling and filtering block **300**, which, as shown in FIG. **1**, may be disposed between the drive output node **106** and the antenna **110**. The matching function transforms the typically 50  $\Omega$  characteristic impedance of the antenna,  $Z_{OUT}$ , to the characteristic impedance of the drive output node **106** (both at the operating frequency  $f_0$ ) in a manner well known to those

of skill in the art. The coupling capacitor  $C_C$  302 blocks DC from the drive output node 106, and may be selected to have an impedance at  $f_O$  that is less, and desirably much less, than the impedance to chassis ground 112, or to circuit common 104, from either side of the capacitor 302. The matching circuit 300 includes an “A” filter element comprising an inductor  $L_A$  304 and a capacitor  $C_A$  306, which may be fabricated as part of the integrated circuit. The matching circuit 300 also includes a “B” filter element comprising an inductor  $L_B$  308 and a capacitor  $C_B$  310 to chassis ground 112 (to which the antenna 110 of FIG. 1 is referenced). The coupling capacitor  $C_C$  302, as well as the inductor  $L_B$  308 and the capacitor  $C_B$  310 may be fabricated on an integrated circuit with the PA, but some of these devices are typically external to the integrated circuit.

### III. Shunt Filtering

FIG. 4 illustrates a shunt filter 400 that may be employed in an iClass PA such as illustrated in FIG. 1. A node 402 of shunt filter 400 may be connected to the drive output node 106 of FIG. 1, and an opposite node 404 may be connected to circuit common 104 of FIG. 1. The shunt filter 400 may provide local minimum impedances at each of one or more particular frequencies. The minimum impedances may be matched to the drive circuit impedance (as established, for example, by the drive elements 200 and the RF choke  $L_S$  108). The shunt filter elements may be fabricated as part of the integrated circuit that includes the drive elements 200, thus reducing loop areas of currents passing through the elements of the shunt filter 400.

A shunt filter 400 for FIG. 1 may be a “transmission line filter” fabricated of reactive elements that are substantially distributed over an appropriate length, for example  $1/4$  wavelength at  $f_O$ . Such a transmission line may be coupled to circuit common via a resonant circuit having a maximum impedance at  $f_O$ , such as a filter 600 as illustrated in FIG. 6 and described in more detail hereinbelow. Such a configuration for the shunt filter 400 provides local impedance minimums (approximately zero) at each even harmonic of  $f_O$ , and local maximum impedances at each odd harmonic of  $f_O$ . Stated more concisely, such a configuration may typically be said to reflect all odd harmonics, and to short all even harmonics, thus permitting operation as a Class F PA.

However, the shunt filter 400 illustrated in FIG. 4 for use in an iClass PA generally differs from such a transmission line filter. First, the shunt filter 400 may employ lumped, rather than distributed, elements. Consequently, local minimum impedances may occur at selected frequencies rather than at all odd, or at all even, harmonics of a resonant frequency (e.g.,  $f_O$ ). Second, the filter may employ series resistive elements to intentionally establish a non-zero value of local minimum impedance. It may be useful, for example, to control the local impedance minimum values so as to match an impedance of the drive circuit at the corresponding frequency (or, alternatively, at  $f_O$ ). As a result of such differences between the circuit illustrated in FIG. 4 and a conventional transmission line filter, the magnitudes of currents in current loops may be reduced. Moreover, drive element power dissipation may be reduced at the frequencies corresponding to the selected minimum impedances.

In FIG. 4, a first shunt filter element includes  $L_{SF1}$  406,  $R_{SF1}$  408, and  $C_{SF1}$  410. These components establish a local minimum impedance at a particular frequency, with the impedance increasing for both higher and lower frequencies. A switch S1 412, in conjunction with an additional capacitor  $C_{SF3}$  414, represents an optional circuit for adjusting the frequency of the minimum impedance of the first filter

element. As shown, the effective value of the series capacitor of the first filter element is increased when S1 is closed and  $C_{SF3}$  is disposed in parallel with  $C_{SF1}$  410.

Of course, such frequency adjustability may be effected in numerous different manners. For example, S1 412 may be a FET for electronically switching the frequency. Additionally or alternatively,  $C_{SF1}$  410, as well as optional  $C_{SF3}$  414, may be varactors (with the corresponding addition of an appropriate control circuit for the DC voltages on such varactors). Moreover, the capacitor  $C_{SF3}$  414 may be disposed in series connection, rather than parallel connection, with  $C_{SF1}$  410, in which event the switch S1 may be configured to bypass the capacitor  $C_{SF3}$  414. Yet further, analogous techniques may be employed to vary inductance, rather than capacitance. For example, the switch S1 412 may selectively bypass a second inductive element, so as to vary the effective inductance of the first shunt filter element.

The second shunt filter element comprises an inductor  $L_{SF2}$  416, a resistive element  $R_{SF2}$  418, and a capacitor  $C_{SF2}$  420. The resonant frequency of the second filter element (or, indeed, of any further filter element) of the shunt filter 400 may be varied by similar techniques as outlined above with respect to the first filter element. It may be useful to have a minimum impedance that is substantially resistive, and/or that is non-zero. In one embodiment, the first and second filter elements are designed to provide local minimum impedances, at a second harmonic and a third harmonic of the operating frequency  $f_O$  respectively, which are approximately equal to the drive circuit impedance. Though only two filter elements are illustrated, additional harmonics may desirably be treated with additional filter elements (not shown).

FIG. 11 is a schematic diagram of a circuit alternative for shunt filter 400 together with matching and coupling circuit 300.  $Z_{drive}$  and  $Z_{OUT}$  of FIG. 11 are connected as shown in FIG. 1.  $C_C$  302 is substantially the same as in FIG. 3, providing DC isolation of the PA from the antenna output. The shunt filter includes a parallel resonant circuit primarily consisting of  $C_{SF}$  980 and  $L_{SF}$  982, which together function as a tank circuit that is resonant at  $f_0$ . All integer harmonic frequencies of  $f_0$  are coupled through Rdrive 984, which is preferably selected to be approximately equal to the characteristic drive impedance of the PA switching circuit. Thereby, all harmonic frequencies of  $f_0$  are terminated at the drive impedance. In some embodiments, alternative filtering, such as two parallel tank circuits each resonant near  $f_0$ , may be disposed in series above Rdrive 984. Dual tank circuits may be configured either to resonate at substantially identical frequencies, thereby increasing the impedance at  $f_0$  and reducing power loss at  $f_0$ , or to resonate at slightly different frequencies, thereby broadening the range of frequencies at which the circuit has high impedance to ease manufacturing tolerances. Following the shunt filter, a matching and filtering network 990 may be as illustrated in FIG. 3, except for two differences: first, coupling capacitor  $C_C$  302 is omitted, and second,  $C_A$  306, being on the antenna side of coupling capacitor  $C_C$  302, is coupled to earth ground 112 rather than circuit common 104. The two common references may be made effectively identical in some integrated circuit layouts.

### IV. PA Output Power Control

FIG. 5 illustrates elements of one possible shunt power control circuit 500 for the PA of FIG. 1. A power control input 502 may establish a bias with respect to chassis ground 112. An inductive impedance  $L_{g1}$  504 (which may reflect, for example, the inductance of a bond wire) is illustrated

between chassis ground and the source of a power control FET  $M_{FC}$  506. A connection 508 may be coupled to circuit common 104 in FIG. 1. An inductance  $L_{g2}$  510 typically exists in series with a bypass capacitor for the power control circuit,  $C_{PC}$  512. Assuming that the DC voltage  $V_{DD}$  is with respect to chassis ground 112, the substantially DC voltage established across  $C_{PC}$  512 will reduce the effective supply voltage with respect to circuit common 104.

Other techniques may also be used to control the output power for a circuit as shown in FIG. 1, particularly when operated in a Class F configuration (rectangular wave input control). Such other techniques may be used either in addition to, or instead of, shunt power control as described above with respect to FIG. 5.

As a first example, referring also to FIG. 2, the bias voltages on the FETs  $M_2$  208 . . .  $M_N$  216 may be adjusted. Efficiency will decrease, but power output will decrease more rapidly. As noted above, bias may generally be set such that  $V_{B_x} = X(V_{peak})/2N$ . However, if  $V_{B2}$  is decreased well below the calculated value, the output voltage  $V_{drive}$  (in iClass operation with harmonic termination) will also decline. Thus, for example, a circuit may be configured as shown in FIG. 7, except that the effective average voltage at the gate of  $M_2$  208 may be controllably reduced. This may be accomplished by making the value of  $RB_1$  708 variable (e.g., by means of a parallel FET). Alternatively, the value of  $RB_1$  708 may be reduced, and  $RB_1$  708 may be coupled to a variable voltage source rather than to reference 202. Reducing the bias voltage will cause corresponding reductions in drive output voltages. As described below in more detail, the self adjusting bias supply circuit of FIG. 7 will permit the bias on  $RB_N$  to gradually follow the reductions in  $V_{drive(peak)}$  that are caused by varying the bias voltage on the gate of  $M_2$ .

PA output power may also be controlled by varying the amplitude of the drive signal. The conduction impedance of the drive elements will be higher when driven with a lower amplitude rectangular wave, resulting in a smaller effective drive voltage. The efficiency of this technique is typically comparable to the efficiency of varying bias voltages.

As discussed below with respect to FIGS. 12 and 14, a series regulator circuit may be used to control PA output power either alone, or in conjunction with one or more other power control techniques.

#### V. Alternative PA Embodiments

FIG. 6 is a simplified schematic diagram of a filter circuit 600 that may be employed in a manner similar to the shunt filter 400 in FIG. 1 to form a versatile PA architecture. The drive output node 106 of FIG. 1 may be coupled to a Zdrive node as an input to 600. The Zdrive node may be coupled via a  $1/4$  wavelength transmission line 602 and a coupling capacitor  $C_{C1}$  612 to an output filter section. The output filter section may comprise a parallel combination of  $L_{OF1}$  610 and  $C_{OF1}$  608, resonant at the operating frequency  $f_0$ . Unlike some embodiments of shunt filters 400, the output filter section of FIG. 6 is typically not part of the PA integrated circuit, and thus is referenced to chassis ground 112 rather than to circuit common. The impedance of this bandpass filter to ground 112 falls rapidly as the frequency deviates from  $f_0$ , and, therefore, the harmonics of the operating frequency are effectively shorted to ground at the output filter end of the transmission line 602. The standing waves of the properly tuned  $1/4$  wavelength transmission line therefore provide a high impedance at each odd harmonic, and a low impedance at each even harmonic, as seen at the Zdrive node. A  $Z_{OUT}$  node 604 may be coupled to a further output

filter section 116–118, an RF switch 120, and antenna 110 as shown in FIG. 1. A matching network (not shown) may also be required, similar to that illustrated in FIG. 3 with the coupling capacitor  $C_C$  302 omitted. Such further filtering and matching circuits, or a transmission line coupled thereto, will ideally appear to the filter circuit 600 as a resistive impedance  $R_{OUTequiv}$  606 at the operating frequency  $f_0$ .

Modified as described above, the circuit of FIG. 1 may be operated as an RF PA of Class A, Class B, Class C, Class E or Class F. For Class A operation, the input signal 102 is sinusoidal and does not cause the current through  $M_1$  202 of FIG. 2 to go to zero. For Class B operation, the input signal 102 is sinusoidal but  $M_1$  202 conducts only 50% of the time (conduction angle 180 degrees). Operation may be Class C, with a conduction angle less than 180 degrees, which yields some efficiency improvement as compared to the Class B operation. In each case the FETs  $M_2$  to  $M_N$  are enslaved to  $M_1$ , and the FET stack of FIG. 2 functions substantially as a single device. The circuit of FIG. 1 may also be operated as an iClass PA in a configuration related to Class F but having dissipative termination for harmonics of the operating frequency.

The circuit of FIG. 1, configured as described immediately above, may also be operated as a Class F RF PA. For Class F operation the input signal is preferably a square wave having a duty cycle that causes the circuit 200 to conduct at precisely a 50% duty cycle. The output voltages resulting from Class F operation generally increase substantially when the conduction duty cycle deviates from 50%. Unfortunately, ordinary manufacturing component variations tend to cause the duty cycle to deviate from 50%, and consequently the circuit may not readily be able to safely and reliably utilize the full voltage withstand capability of the drive element(s).

#### VI. Alternative Bias and Slaving

Embodiments of a FET stack, as described herein, may include a signal-input FET that receives a drive signal coupled to its gate with respect to a reference voltage that is coupled to its source. The remaining FETs of the stack may be enslaved to the signal-input FET, such that they conduct under the control of conduction in the signal-input FET. The method by which the other FETs of a FET stack are enslaved to the signal-input FET must cooperate with the method employed to properly bias the FETs. Accordingly, enslavement and biasing are addressed together.

In RF PAs generally according to FIG. 1, the peak voltage of drive output node 106 (with respect to circuit common 104) will often exceed twice the available supply voltage  $V_{DD}$  114. As such, bias voltages as required for the driver elements of FIG. 2 may not be readily available. This lack may be remedied by recourse, for example, to a charge pump. A charge pump that is preferred from the standpoint of minimal noise generation is described in commonly owned and copending U.S. patent application Ser. No. 10/658,154, "Low-Noise Charge Pump Method and Apparatus," which is hereby incorporated in its entirety by reference. As described therein in detail, a low-current voltage source may be readily established at any desired voltage. Such voltage source may be provided, as needed, to any of the bias voltage inputs  $VB_2$  210 to  $VB_N$  218 in FIG. 2.

FIG. 7 illustrates a self-adjusting bias supply that may be employed to bias the FETs of a FET stack. As in FIG. 2, a signal input 206 is coupled to the gate of a signal-input FET  $M_1$  204. The source of the FET  $M_1$  204 is coupled to  $V_{dREF}$  202, while its drain is coupled in series with each subsequent

FET of the stack, including  $M_2$  208 . . .  $M_N$  216. The drain of the last FET of the stack,  $M_N$  216, is coupled to Vdrive 224. To provide a bias voltage that reflects Vdrive 224, a diode (or equivalent)  $D_B$  702 charges a bias supply capacitor  $C_B$  704 to Vbias 706. Vbias will charge to approximately Vpeak, the peak value of Vdrive 224 with respect to  $V_{d\_REF}$  202. If a time constant associated with  $C_B$  704 is sufficiently long, then Vbias will remain substantially at this value. The time constant is the product of the capacitance of  $C_B$  704 multiplied by the resistance, to  $V_{d\_REF}$  202, of the resistive voltage divider having N resistors including  $RB_1$  708,  $RB_2$  710, . . . , and  $RB_N$  712. The total resistance of this voltage divider may be designated  $R_{B\_sum}$ .

With respect to Equations 1, 2 and 3 that are set forth above, "X" represents the position of the particular FET in a stack, and N represents the total number of FETs in such stack. Assuming that all FETs are approximately identical, it may be seen that:

$$RB_1=RB_2= \dots =RB_{(N-1)} \quad (\text{Eqn. 4), and, accordingly,}$$

$$RB_N=(N-1)RB_1 \quad (\text{Eqn. 5).}$$

In view of equations 1–5, it may be seen that, for the last FET of the stack ( $X=N$ ),

$$(C_{OX}+C_{OXX})=C_{OX}(N-1)/(N-2) \quad (\text{Eqn. 6),}$$

$$RB_{X(equiv)}=RB_1 (N-1)/2 \quad (\text{Eqn. 7), and}$$

$$RB_1 \geq 20(N-2)/[C_{OX}(N-1)^2 f_0] \quad (\text{Eqn. 8).}$$

Thus, for  $N=3$ ,  $RB_1 \geq 5/C_{OX}f_0$ , and  $RB_1$  declines monotonically as N increases (for given values of  $C_{OX}$  &  $f_0$ ).

The total resistance  $R_{B\_sum}$  of the resistive divider described above, in which the lower (N–1) resistors are  $RB_1$  and the top (or Nth) resistor is the sum of the lower resistors, is simply  $2(N-1)RB_1$ . The ripple on Vbias 706 may be acceptably low if the time constant  $C_B (R_{B\_sum}) \geq 10/f_0$ . Coupling that criteria with Eqn. 8 yields

$$C_B \geq C_{OX}(N-1)/(N-2)/4 \quad (\text{Eqn. 9).}$$

Thus, for  $N=3$ ,  $C_B \geq C_{OX}/2$ . As N increases, smaller values of  $C_B$  (with respect to  $C_{OX}$ ) will be required to achieve the same ripple voltage.

A significant ripple voltage is not necessarily a problem, and  $C_B$  may desirably assume even smaller values if rapid self-adjustment response is required. Indeed, in view of the filtering effected by each gate bypass capacitor  $CG_X$  in conjunction with  $RB_{X(equiv)}$ , an average value is the main consideration for Vbias. However, if the average value of Vbias is permitted to decline significantly below Vpeak for any reason, including the presence of substantial ripple on  $C_B$ , the skilled person will understand that the resistive divider values should be adjusted accordingly.

FIG. 8 illustrates an alternative for providing both bias and gate coupling for FETs  $M_3$  and above ( $X \geq 3$ ). A reference 802 is coupled to the source of a signal-input FET  $M_1$  804, the gate of which is coupled to an input signal 806. The drain of  $M_1$  804 is coupled to the source of a second FET  $M_2$  808. A bias voltage is applied to a bias input 810, which is coupled via a bias resistance  $RB$  812 to the gate of  $M_2$  808, and to a relatively large capacitance  $CG_2$  814. The drain of  $M_2$  808 is coupled to the source of a third FET of the stack,  $M_3$  816. The drain of  $M_3$  816 may be coupled to a further FET stage, if present. However, the drain of the FET of the last stage,  $M_3$  816 as shown in FIG. 8, is coupled to an output node Vdrive 818.

The gate 820 of FET  $M_3$  816 may be coupled to the base of the preceding stage FET  $M_2$  808 via a zener diode DZ 822. DZ 822 may have a conduction threshold knee at approximately the maximum desired value for  $V_{DS}$  of  $M_3$  816. (A circuit operating similarly to a zener diode may be used instead of DZ 822.) Additional FET stages designated by subscripts "Y" may be added. For such additional stages, corresponding additional zener diodes may be employed in like manner as DZ 822, i.e., anode to the gate of additional FET  $M_Y$ , and cathode to the gate of  $M_{(Y-1)}$ .

VIA. Alternative Stacked FET Switch Configurations and Extensions

The FET stacks described above with respect to FIGS. 1–8 employ N-channel FETs (N-FETs). P-channel FET (P-FET) stacks may be fabricated analogously, by reversing the polarity of each voltage and polarized component associated with the stack. The P-FET stack reference voltage will generally be coupled to the source of a first, signal-input FET  $M_{P1}$ . Such inverted circuits will operate according to substantially the same principles as the N-FET stack circuits described above. For example, Vdrive 818 may be negative with respect to reference 802 in FIG. 8 if all FETs are P-channel, and the zener DZ 822 connection is reversed (anode and cathode exchanged).

FIG. 9 is an exemplary circuit that employs both an N-channel FET stack comprising N-channel FETs  $M_{N1}$  902,  $M_{N2}$  904 and  $M_{N3}$  906, plus a P-channel FET stack comprising P-channel FETs  $M_{P1}$  908,  $M_{P2}$  910 and  $M_{P3}$  912. For Class D operation, an input square wave may be provided with respect to common 914 at the input 916 to the N-FET stack, and coupled to an input for the P-FET stack on the gate of  $M_{P3}$  912 via a capacitor  $C_{GP1}$  918. A bias voltage, set for example to one half of  $V_{GS(on)}$  below the P-FET stack reference  $V_{DD}$  930, may be provided for  $M_{P1}$  908 via a bias resistor  $R_{BP1}$  920. Alternatively, the capacitor  $C_{GP1}$  918 and the bias resistor  $R_{BP1}$  920 may be deleted, and the input 916 and the gate of  $M_{P1}$  908 may each be driven, instead, by means of an appropriate non-overlap clock generator (not shown).

Control of the N-FETs  $M_{N2}$  904 and  $M_{N3}$  906 is substantially as described with respect to FIG. 2 (for  $N=3$ ). The gate of  $M_{N2}$  904 is coupled to common (i.e., decoupled) via a capacitor  $C_{GN2}$  922 having a relatively large value, and may be biased to about  $(V_{DD}/3)$  volts via a bias resistor  $R_{BN2}$  924. The gate of  $M_{N3}$  906 is decoupled to common via a capacitor  $C_{GN3}$  926 having a value calculated as described with respect to FIG. 2, and may be biased to  $(V_{DD}/2)$  volts via a bias resistor  $R_{BN3}$  928.

The P-FET stack is controlled analogously as the N-FET stack. The polarities of the bias voltages are inverted, and referenced to the "reference voltage" of the P-FET stack, which in this case is  $V_{DD}$  930. For purposes of capacitively decoupling the P-FET gates, the fact that the P-FET reference voltage is  $V_{DD}$  930 is likely to make little difference, because  $V_{DD}$  is typically closely coupled to the circuit common 914 that is the reference for the N-FETs. Therefore, decoupling capacitors 932 and 936 may alternatively be connected to circuit common 914. As shown, however, the gate of  $M_{P2}$  910 is decoupled to  $V_{DD}$  via a relatively large capacitor  $C_{GP2}$  932, and biased to about  $2/3 V_{DD}$  via a bias resistor  $R_{BP2}$  934. The gate of  $M_{P3}$  912 is decoupled to  $V_{DD}$  via a capacitor  $C_{GP3}$  936. The value of  $C_{GP3}$  936 may be calculated as described with respect to FIG. 2 for  $X=3$  and  $N=3$ . The gate of  $M_{P3}$  912 is biased to about  $V_{DD}/2$  via a bias resistor  $R_{BP3}$  938.



An output voltage  $V_{drive}$  **940** will be driven between common and  $V_{DD}$ , according to whether the N-FET stack is conducting or the P-FET stack is conducting. The output  $V_{drive}$  **940** may be shunt filtered by a shunt filter **950**, and may be processed by a matching and coupling circuit **960**, as described below in more detail with respect to FIG. **10**. From the matching and coupling circuit **960** the signal may proceed to an antenna **942**, typically via a transmission line, one or more further filter sections, and an RF switch (not shown).

The shunt filter **950** of FIG. **9** may be similar to that shown in FIG. **4**, or that shown in FIG. **6**. The matching and coupling circuit **960** of FIG. **9** may, for example, be similar to that shown in FIG. **3**. However, FIG. **10** illustrates filtering that may be employed for both blocks **950** and **960** in the circuit of FIG. **9**. The capacitor  $C_S$  **952** may serve as the shunt filter **950**. The remainder of FIG. **10** may function as the matching and coupling circuit **960** of FIG. **9**. An inductor  $L_C$  **954** may comprise a physical coupling connection. A coupling capacitor  $C_C$  **962** serves to block DC.  $L_A$  **964**,  $C_A$  **966**,  $L_B$  **968** and  $C_B$  **970** may be configured for matching to the output impedance  $Z_{OUT}$ , which is typically 50 ohms.

#### VII. Monolithically Integrated, Medium Power Dual-Band RF Transceiver

An RF transceiver, such as the dual-band RF transceiver represented in FIG. **12**, typically includes a received-signal amplifier such as items **1226** or **1256** of FIG. **12**. Such a received-signal amplifier is typically a low noise amplifier (LNA), and is employed to condition signals received from the antenna. An RF front end may be considered to be an RF transceiver circuit that does not necessarily include an LNA.

In most RF transceivers, discrete integrated circuits must be combined in a module to fabricate a complete RF front-end section. Typically, at least the antenna switch will be fabricated on a different, separate integrated circuit (IC) from the PA, and often many more discrete integrated circuits must be connected via off-chip wiring to fabricate an RF front end module. Each such discrete integrated circuit must be defined by particular performance requirements which ensure that the module functions properly even when the discrete integrated circuits which it comprises are from different lots, or have been designed and manufactured differently from other integrated circuits that perform the same tasks. Such performance requirements, which are thus developed to achieve mix-and-match flexibility and reliability, may well exact a cost for the discrete ICs that are combined in these devices.

PAs in multiple-IC transceiver modules typically produce a signal of substantial power on demand. An antenna switch unit couples an antenna (more precisely, an antenna connection) to either a transmit signal matched to the expected antenna impedance (e.g., 50 ohms), or to a receive signal input. However, damage to the antenna connection or the antenna may cause the impedance reflected to the antenna connection point from the antenna connecting line to vary drastically from its expected value. In such event, a large voltage standing wave (VSW) may be caused by the resulting mismatch between that reflected impedance, and the expected value to which the transmit signal has been matched. Voltage excursions much larger than those expected during normal operation may be generated as a consequence of such mismatch-induced VSWs. Voltage withstand requirements for antenna switches are typically set much higher than normal peak operating voltages to avoid damage under such mismatch conditions.

The IC area occupied by switching devices (such as FETs) in a power-switching circuit, such as an antenna switch, may increase as the square of the voltage they are capable of withstanding. Thus, halving the required withstand voltage may reduce the switch device area to one fourth. Moreover, because these devices dominate the IC area used by an antenna switching circuit, a very substantial saving in IC area (and thus in manufacturing cost) may be realized by reducing their required withstand voltage. Such reduction may not be practical when discrete ICs must be coupled to fabricate an entire transceiver. However, a single IC that includes all devices from a PA, through an antenna switch, and to an antenna connection, may take advantage of reliable internal coupling and close device matching to protect against high mismatch-induced VSWs. Due to these advantages of integration, substantial savings in device area can be realized as compared to combining discrete ICs to fabricate a comparably-performing transceiver.

FIG. **12** is a simplified block schematic diagram of the primary RF sections of a dual-band transceiver that is configured to benefit from such internal protection. A low-level signal at a first operating frequency  $f_{O1}$  is coupled to an input node **1202** from a source which may (but need not) be on the same IC chip. The signal is amplified through any suitable amplifier, as indicated by amplifier **1204**. The signal produced by the amplifier **1204** may deviate considerably from a preferred rectangular shape if a pulse adjustment circuit **1500** is provided to improve rectangularity, and preferably to also adjust the duty cycle, of the waveform that is ultimately coupled into a power amplifier (PA) **1206**.

The output of the pulse adjustment circuit **1500** is the input to the PA **1206**, which draws power from a supply  $V_{DD}$  **114** via supply conditioning elements, including a series regulator **1400** and an RF choke (RFC)  $L_S$  **108**, to generate a PA output signal. The PA output signal has a characteristic impedance resulting from the input signal, the PA circuit elements, and the supply conditioning elements, and generally differs from the impedance expected at the antenna node **1214**. A coupling, matching and filtering network may be needed, for example as represented by a block **1210**. Such a network may couple the PA output signal to the antenna switch while blocking DC current, and may transform the PA output impedance to the desired antenna node impedance (e.g., 50 ohms). It may also filter undesirable signal components, such as harmonics of  $f_{O1}$ , from the PA output signal before coupling it to an "A" input of an antenna switch **1700**. If separate grounds are maintained as a matter of design preference, then the output of the coupling, matching and filtering block **1210** may be referenced to a ground reference **112**, which may be distinguishable from a circuit common reference **104** used elsewhere in the circuit. The antenna switch **1700** selectively couples the signal to the antenna node **1214**, from whence it may be coupled, for example by transmission line, to an antenna that may be separated from the IC chip.

Availability of the antenna connection of the antenna switch on the same IC chip as the PA (and all intervening circuitry) provides an opportunity to reliably limit the maximum electrical stress that must be endured by the antenna switch circuitry, by the PA, or by coupling, matching or filtering elements. An output sensor **1600** may be coupled to the antenna node **1214**, sensing the electrical stress and providing a signal that will cause the PA to reduce its output if the electrical stresses are excessive. To this end, the output **1220** of output sensor **1600** is coupled to an input "B" of a PA control block **1300**. An "A" input **1224** to the PA control block **1300** may receive an amplitude control signal to adjust

the envelope amplitude of the PA output signal. This input may also be used to restrict, or even to terminate, output from the PA. Both the "A" and "B" inputs may affect an output "D" that is coupled from the PA control block 1300 to the series regulator block 1400. A "C" input 1222 to the PA control block 1300 may be provided with information, or a signal, that controls an "E" output from the block 1300. The "E" output may be coupled to the pulse adjustment circuit 1500 to control the duty cycle of the rectangular wave that is input to the PA 1206. Duty cycle control may, for example, provide another means to reduce the power level of the PA output signal. The signal path from 1202 may be tuned for a first band of operating frequencies, which include  $f_{O1}$ .

The antenna switch 1700 may selectably decouple the antenna node 1214 from the first-band transmit signal on input "A," and couple the antenna node instead to output "B" so as to deliver a signal received from the antenna to a receive preamplifier 1226 for a first receive band. The receive preamplifier 1226 (as well as 1256) is preferably a low noise amplifier (LNA). LNAs are not necessarily included in integrated front ends as described herein, though they typically are included in complete transceiver circuits. The output from receive preamplifier 1226, if present, may be delivered to further first receive band circuitry either on or off the same IC chip. The antenna switch 1700 may similarly selectably couple the antenna node 1214 to a second receive band preamplifier 1256 to amplify a signal from the antenna to a second receive band output node 1258. That output may be delivered to further second receive band circuitry either on or off the IC chip.

Similarly as described above with respect to the first transmit band circuitry, a transmit signal at a second operating frequency  $f_{O2}$  in a second operating frequency band may be provided to an input 1232, and amplified by an amplifier 1234. The duty cycle and waveform of the signal output from the amplifier 1234 may be conditioned by a pulse adjustment 1501 under control of a PA control block 1301, and then delivered as an input to a second band PA 1207. The second band PA 1207 will generate a second-band PA output signal using power that is provided from  $V_{DD}$  114, as limited by a series regulator 1401 under control of the PA control block 1301, via an RF choke 109. The second-band PA output will have a characteristic impedance, and will be coupled to the "D" input of the antenna switch 1700 via a block 1211 that couples the signal, matches the PA output and antenna node impedances, and filters the output signal. The antenna switch 1700 may be controlled to couple the "D" input to the antenna node 1214, from whence the signal will be delivered to the antenna 1216. The output 1220 of the output sensor 1600 may be coupled also to a "B" input to the second-band PA control block 1301, whereby excess output voltage will cause the second-band PA output signal to be reduced to safe levels. The second-band PA control block 1301 may also accept an envelope-control signal at an "A" input 1254, as well as a duty-cycle control signal at a "C" input 1252.

Though not shown, control circuitry is preferably enabled only when the associated PA is active. Exemplary circuitry for a PA control block, such as 1300 or 1301, is shown in FIG. 13. Exemplary circuitry for a series regulator, such as 1400 or 1401, is shown in FIG. 14. Exemplary circuitry for a pulse adjustment circuit, such as 1500 or 1501, is shown in FIG. 15. The PAs 1206 or 1207 may be fabricated as described for Driver Elements 200 of FIG. 1, together with a shunt filter, such as block 400 of FIG. 1 or the appropriate elements of FIG. 11. Coupling, matching and filtering cir-

cuits 1210 and 1211 may be fabricated as described above for FIG. 3, or FIG. 10, or in any other manner to obtain similar coupling, matching and filtering effects. Note that if a circuit as shown in FIG. 11 is to be employed, the coupling capacitor 302 will be disposed before the shunt filter, and the matching and filtering will be provided subsequently, as in block 990.

FIG. 13 illustrates exemplary circuitry for a PA control block 1300. An enable input "A" 1302 may be coupled directly to a FET 1304, such that if input 1302 is approximately ground potential, an output "D" 1306 can draw no current. Conduction into the output "D" 1306 may control the PA output power via a series regulator, such as shown in FIG. 14, such that when output 1306 conducts no current, no current will be provided to the PA, reducing output power to zero as discussed below with respect to FIG. 14. FET 1308 is biased by resistors 1310 and 1312, which may have equal values, a nominal value such as 30–50 k $\Omega$  being selected for engineering convenience. This configuration protects low-voltage FETs, ensuring that  $V_{GD}$ ,  $V_{GS}$ , and  $V_{DS}$  for all of FETs 1304, 1308 and 1314 do not significantly exceed  $V_{DD}/2$ .

A power sense input "B" 1316 may be coupled to resistor 1318. Resistor 1318 may be about 30–50 k $\Omega$ , and reasonably equal to a resistor 1320 to establish unity gain for op amp 1322. A power set input "C" 1324 may be set, in one embodiment, from 0V to  $2 \cdot V_{th}$  (FET threshold voltage), where  $V_{th}$  may be 0.4 to 0.7V, nominally about 0.5V, and is consistent within the circuit. The noninverting input of op amp 1322 is prevented from exceeding this voltage range by means of a resistor 1326 (e.g., 30–50 k $\Omega$ ) together with diode-connected FETs 1328 and 1330, thus limiting the maximum power that may be selected. The skilled person may adjust circuit values, and circuit design, so as to achieve a selectable output power up to a fixed circuit design maximum. In particular, one or both diode-connected FETs 1328 and 1330 may be replaced by a network that includes a bandgap reference, for example to increase accuracy of power settings and output voltage limits. Many other techniques may be employed to achieve similar effects. When power sense input "B" 1316 exceeds a value established by the power set input voltage, FET 1314 will cease conducting, precluding conduction into output "D" 1306.

The PA control block 1300 also provides an output "E" 1512 to control the duty cycle adjustment effected by the pulse adjustment circuit 1500 of FIG. 12. A reference voltage, which may be adjustable according to factors such as fabrication process parameters, is provided at an input 1332. This voltage is doubled by an op amp 1334 under control of equal-valued resistors 1316 and 1318. Of course, in other embodiments the gain of circuitry such as shown in FIG. 13 will likely be different, and resistors setting such gains, for example 1316 and 1318, will accordingly differ in value. By reducing the duty cycle somewhat, the PA output power may be correspondingly reduced, and by reducing it to zero the PA output may be suppressed entirely. A reference voltage provided to an input 1322 of an amplifier 1320, the gain of which may be controlled in the usual manner by resistors 1324 and 1326, may serve to establish the voltage at output "E" 1512 to control duty cycle of the output of block 1500.

FIG. 14 illustrates an exemplary series regulator circuit 1400 for limiting the effective voltage provided to the PA, and thus limiting the PA output amplitude. The voltage provided to input 1306, as compared to  $V_{DD}$ , is divided via resistors 1406 and 1404 to control a P-channel FET 1402 and also protect FET 1402 from excessive voltage between

any two nodes. A P-channel FET **1408** is biased by resistors **1410** and **1412** so as to divide maximum voltages that are generated between  $V_{DD}$  and an output **1414**, somewhat equally between FETs **1402** and **1408**. The output **1414** provides power to the PA via an RF choke. The FETs **1402** and **1408** may, for example, have  $V_{GS}$  threshold voltages of between  $-0.4V$  and  $-0.7V$ . Resistors **1404**, **1406**, **1410** and **1412** may all be substantially equal, with a magnitude selected for engineering convenience to be, for example, 30–50 k $\Omega$ . These exemplary values and relative values may be varied for engineering convenience.

FIG. **15** is a schematic representation of an exemplary signal conditioning circuit **1500**. An input signal may be provided on an input node **1502**, and coupled via a diode-connected FET **1504** to the input of an inverter **1506**. When the input signal voltage, plus the  $V_{DS}$  threshold of FET **1504**, is less than the threshold of the inverter **1506**, the output of inverter **1508** will be low. However, when the voltage of the input signal rises above this value, the FET **1504** will cease conducting. Thereafter, even if the voltage of input **1502** is quite high (e.g.,  $V_{DD}$ ), current from the input will be limited by P-channel FET **1510** under control of an input voltage **1512**. Such current through the FET **1510** must charge a capacitor **1514** (which may be a metal-insulator-metal or “MIM” capacitor of about 0.025 to 0.05 pF) until the input to inverter **1506** rises above its switching threshold. At that point the inverters **1506** and **1508** will change state rapidly due to positive feedback via the capacitor **1514**, providing square edges at an output node **1516**, rise and fall times being limited primarily by delays through the inverters **1506** and **1508**. If the signal at the input **1502** is a roughly rectangular wave of about 50% duty cycle, as in a preferred embodiment, the voltage at the control input **1512** may be adjusted such that the output duty cycle is reduced from 50% to an arbitrarily lower value that may reach zero. The input signal may be configured to have a duty cycle exceeding 50% if a wider range of output duty cycle is desired.

FIG. **16** is a schematic of exemplary circuitry **1600** for sensing peak voltage at a sense node **1602**, which may for example be connected directly to antenna node **1214** of FIG. **12**. An input divider may be used as shown to sense relatively high voltages. Four roughly equal resistors **1604**, **1606**, **1608** and **1610** having a relatively low resistance, such as 1 k $\Omega$ , may be used. Diode-connected FET **1612** conducts when this voltage is high, providing current through a resistor **1614** of about 24 k $\Omega$  to a capacitor **1616** of about 1 pF. Many other values may be used, so long as the time constant established by resistor **1614** and capacitor **1616** is much smaller than the duration of any event that could cause the output voltage to rise (for a given level of PA output signal). For example, an antenna mechanical event that caused the antenna impedance to vary drastically from the design value, thereby causing a high voltage standing wave to appear, will take at least milliseconds to occur. The time constant of approximately 24 nS of the exemplary circuit **1600** is well below such an event duration. However, the corner frequency due to these components should generally be well below both the first and second band operating frequencies  $f_{O1}$  and  $f_{O2}$ , in order to avoid circuit oscillations. If event durations may approach  $1/f_O$ , then other common circuit design considerations may require a more complicated circuit to avoid oscillation while ensuring that the response is sufficiently fast to prevent excessive voltages.

FIG. **17** is a simplified schematic of exemplary circuitry **1700** for an antenna switch. Further details regarding design and fabrication of such an RF switch may be found in U.S. Pat. No. 6,804,502, issued Oct. 12, 2004 and entitled

“Switch Circuit and Method of Switching Radio Frequency Signals.” Circuitry to provide control signals is not shown. Moreover, the control voltages should preferably be either “high,” nearly  $V_{DD}$ , or “low” at nearly  $-V_{DD}$ . To generate  $-V_{DD}$  control voltages, a negative voltage generator will be helpful, preferably a low-noise circuit such as described in copending, published U.S. patent application Ser. No. 10/658,154, filed Sep. 8, 2003 and entitled “Low Noise Charge Pump Method and Apparatus.” Such a low-noise charge pump is important for avoiding unintended emissions from the antenna.

A port node **1780** is the common connection of the switch **1700**. In FIG. **12**, the common connection of the switch **1700** is coupled to the antenna node **1214**. The common connection is generally coupled to only one RF port (port A **1710**, port B **1730**, port C **1750**, or port D **1770**) at a time. Each RF port has a corresponding “+” control node and a corresponding “-” control node. For ports A, B, C and D, the “+” control nodes are nodes **1708**, **1728**, **1748** and **1768**, respectively, while the “-” control nodes are nodes **1718**, **1738**, **1758** and **1778**, respectively.

To couple an RF port to the common connection, a “high” voltage ( $\sim V_{DD}$ ) is applied to the port’s corresponding “+” control node, while a “low” voltage ( $\sim -V_{DD}$ ) is applied to the port’s corresponding “-” control node. Meanwhile, a “low” voltage is applied to each “+” control node corresponding to another RF port, and a “high” voltage is applied to each “-” control node corresponding to another RF port. Thereby, a selected RF port will be coupled to the common connection, while every other RF port will be coupled to ground. Thus, to couple RF port A **1710** to common connection **1780**, a “high” voltage is applied to control nodes **1708**, **1738**, **1758**, and **1778**, while a “low” voltage is applied to all other control nodes (**1718**, **1728**, **1748** and **1768**).

Every resistor will typically have the same value. In some embodiments, the value will be roughly 30–50 k $\Omega$ . The resistor is selected such that the time constant of the parasitic gate capacitance of a FET (e.g.  $M1_A$  **1701**), in conjunction with the value of its corresponding gate resistor (e.g. **1704**) is much greater than  $1/f_O$ , where  $f_O$  is the lowest significant frequency of the RF signal being controlled. The illustrated configuration serves to divide the voltage appearing across FET stacks (such as the stack consisting of FETs  $M1_A$ , **1701**,  $M1_B$  **1702** and  $M1_C$  **1703**, the stack consisting of FETs  $M2_A$ , **1704**,  $M2_B$  **1705** and  $M2_C$  **1706**, and so on) uniformly, reducing compression effects. The FET stacks (such as FETs **1701**, **1702** and **1703**) that provide the switching functions may include more or less than the three devices that are shown for illustration; stacks of at least nine devices have been successfully fabricated. Due to the voltage stress distribution uniformity, a wide range of signal voltages and fabrication process parameters may be accommodated.

#### Integrated Circuit Fabrication and Design

Integrated circuit fabrication details are not provided in the above description. In some preferred embodiments, including some which have output powers in excess of 1 W at around 2.4 GHz, the integrated circuits may be fabricated in accordance with ultrathin silicon on sapphire processing as described in U.S. Pat. No. 5,663,570, issued Sep. 2, 1997 and entitled “High-Frequency Wireless Communication System on a Single Ultrathin Silicon On Sapphire Chip.” Other semiconductor-on-insulator (SOI) techniques may be used to fabricate a dual-band transceiver integrated circuit as described above, for at least some frequency bands and power levels.

The preferred integrated circuit fabrication techniques described above readily produce FETs having a rather low maximum  $V_{DS}$ . Accordingly, various techniques are described for stacking FETs to achieve control of higher voltages while maintaining consistent processing. Using other manufacturing techniques, or lower voltages and impedances, a need for cascode or multiply-stacked FETs may be avoidable.

## CONCLUSION

The foregoing description illustrates exemplary implementations, and novel features, of a method and apparatus that employs stacked transistors to control conduction between a pair of nodes in an integrated circuit. The skilled person will understand that various omissions, substitutions, and changes in the form and details of the methods and apparatus illustrated may be made without departing from the scope of the invention. Numerous alternative implementations have been described, but it is impractical to list all embodiments explicitly. As such, each practical combination of the apparatus or method alternatives that are set forth above, and/or are shown in the attached figures, constitutes a distinct alternative embodiment of the subject apparatus or methods. Each practical combination of equivalents of such apparatus or method alternatives also constitutes a distinct alternative embodiment of the subject apparatus or methods. Therefore, the scope of the presented invention should be determined only by reference to the appended claims, and is not to be limited by features illustrated in the foregoing description except insofar as such limitation is recited, or intentionally implicated, in an appended claim.

It will be understood that similar advantages of integration will accrue to circuits having other functional blocks. For example, mixers may be incorporated on such a device, enabling integration of more portions of transmission signal processing. Phase locked loops may further enhance the ability to generate the transmission signal on the same monolithic IC as the RF front end or transceiver. Additional types of filters may be useful, for either or both of receive and transmission processing.

All variations coming within the meaning and range of equivalency of the various claim elements are embraced within the scope of the corresponding claim. Each claim set forth below is intended to encompass any system or method that differs only insubstantially from the literal language of such claim, if such system or method is not an embodiment of the prior art. To this end, each described element in each claim should be construed as broadly as possible, and moreover should be understood to encompass any equivalent to such element insofar as possible without also encompassing the prior art.

What is claimed is:

1. Integrated RF front-end circuitry on a monolithic integrated circuit, comprising:

- a) an RF signal amplifier configured to receive a transmit signal having frequency content and phasing that is substantially suitable for transmitting, and to amplify such signal to establish an amplified transmit signal;
- b) an RF power amplifier (PA) circuit having an input node coupled to an input signal derived from the amplified transmit signal, the RF PA being configured to amplify such input signal to generate a power amplified transmit signal having a power amplifier output characteristic impedance, and including a regulator circuit configured to controllably constrain an amplitude of the power amplified transmit signal;

- c) a matching, coupling and filtering network configured to condition the power amplified transmit signal by blocking DC components, changing the characteristic impedance of the signal, and rejecting unwanted frequencies, to establish an antenna-matched transmit signal;
- d) an antenna switch configured to controllably couple the antenna-matched transmit signal to an antenna connection node, or to decouple the antenna connection node from the transmit signal and couple the antenna connection node instead to a receive signal amplification path;
- e) a transmit signal sensing circuit configured to generate a transmit power signal that reflects at least an amplitude of the transmit signal that is coupled via the antenna switch; and
- f) a control circuit configured to cause the regulator circuit to constrain the power amplified transmit signal in response to the transmit power signal so as to substantially prevent the amplitude of the transmit signal coupled by the antenna switch from exceeding a predetermined limit.

2. The integrated circuit of claim 1, further comprising a rectangular wave conditioner having an input coupled to the amplified transmit signal, an output coupled to the RF PA input node, and being configured to adjust a waveshape and duty cycle of the amplified transmit signal to generate a rectangular wave having a duty cycle that is particularly suitable for the RF PA input node.

3. The integrated circuit of claim 2, wherein the rectangular wave conditioner includes a control section configured to adjust the duty cycle of the rectangular wave coupled to the RF PA input node under control of a duty cycle control signal coupled to the rectangular wave conditioner.

4. The integrated circuit of claim 1, wherein the RF PA includes a switching circuit disposed between an output drive node and a circuit common, configured to avoid linear operation and substantially operate at only a minimum impedance or a maximum impedance, and a radio frequency choke (RFC) coupled between the output drive node and the regulator circuit.

5. The integrated circuit of claim 4, wherein the switching circuit of the RF PA comprises a plurality of series-connected FETs of common polarity that are configured to divide maximum voltage stresses applied to the switching circuit approximately equally between themselves.

6. The integrated circuit of claim 5, wherein the plurality of series-connected FETs is a multiplicity of series-connected FETs configured to switch on and off substantially concurrently with each other.

7. The integrated circuit of claim 4, wherein the RF PA comprises only a solitary one of such switching devices, the solitary switching device consisting of one or more FETs that all conduct substantially concurrently, and further comprises a shunt filter disposed between the output drive node and a circuit common, the shunt filter being configured to conduct signal components of the power amplified transmit signal at one or more harmonics of an operating frequency  $f_O$  through a significantly resistive impedance, while substantially rejecting signal components at  $f_O$ .

8. The integrated circuit of claim 7, wherein the shunt filter has an impedance that is a function of frequency, having local minimum values approximately equal to the power amplifier output characteristic impedance at frequencies of  $2*f_O$  and  $3*f_O$ .

9. The integrated circuit of claim 1, wherein the antenna-matched transmit signal has an operating frequency  $f_O$  of at

least about 900 MHz, and the integrated RF front-end circuitry is configured to deliver at least about 1 W of power to the antenna connection node at  $f_O$ .

10. The integrated circuit of claim 1, further comprising a second RF PA according with clause (b) but accepting an input signal at a second operating frequency  $f$ , and having a regulator circuit controlled by a signal from the transmit signal sensing circuit; a second matching, coupling and filtering circuit according with clause (c) but configured to produce a second antenna-matched transmit signal; wherein the antenna switch is further configured to controllably couple the antenna connection node exclusively to the second antenna-matched transmit signal, or exclusively to a second receive signal amplification path.

11. An RF power amplifier (PA) configured to produce an output signal at an output drive node, the RF PA comprising:

- a) an input node configured to receive an RF input signal at an operating frequency  $f_O$ ;
- b) a switching circuit configured to couple the output drive node to a circuit common through an "on" impedance, or to substantially decouple the output drive node from the circuit common, under control of the RF input signal, substantially avoiding linear operation;
- c) an RF choke (RFC) coupled between a power source  $V_{DD}$  and the output drive node, and configured to deliver current having a waveform that is substantially sinusoidal at  $f_O$  under control of the switching circuit operation; and
- d) a shunt filter disposed between the output drive node and the circuit common and configured to conduct current through a terminating impedance  $Z_T$  having a resistive component roughly equal to a resistive component of a characteristic output impedance  $Z_O$  of the RF PA for a component of the output drive signal having a frequency that is an integer harmonic of  $f_O$ .

12. The RF PA of claim 11, wherein the shunt filter has a local minimum impedance at a frequency that is an integer harmonic of  $f_O$ .

13. The RF PA of claim 12, wherein the shunt filter has local minimum impedances at  $2*f_O$  and  $3*f_O$ .

14. The RF PA of claim 13, wherein the local minimum impedances of the shunt filter are approximately equal to  $Z_O$  at the output drive node.

15. The RF PA of claim 11, further comprising an input conditioning circuit coupled to the input node and config-

ured to provide a signal derived from the RF input signal to control the switching circuit, the derived signal having a substantially rectangular waveform with a duty cycle that is controlled by the input conditioning circuit.

16. A method of fabricating an RF front end circuit on a single monolithic integrated circuit chip, comprising:

- a) providing only one solitary antenna connection node for coupling the RF front end to an antenna separate from the chip, and coupling the antenna connection node to
  - i) a transmit signal sensing circuit configured to develop a signal reflective of a transmit signal amplitude, and
  - ii) a common connection of an antenna switch that is disposed on the chip;
- b) coupling an input signal node to a transmit signal amplifier configured to amplify a received transmit signal;
- c) laying out a power amplifier (PA) having a switching circuit configured to operate in switching mode, without substantial linear operation, to switch an output drive node to circuit common, or not, under control derived from the amplified received transmit signal, such that the output drive node has a characteristic impedance  $Z_{drive}$  at an operating frequency  $f_O$ ;
- d) coupling the PA output drive node to a first connection of an RF choke (RFC), and coupling a second connection of the RFC to a power source via a regulator circuit;
- e) coupling the PA output drive node to an input of the antenna switch via a coupling, matching and filtering network such that a transmit signal thus switchably coupled to the antenna connection node has a characteristic impedance substantially equal to an expected impedance of a connection to the antenna;
- f) coupling, to the antenna connection, an output signal sensing circuit configured to generate a signal reflective of excessive voltage at the antenna connection; and
- g) coupling the signal reflective of excessive voltage at the antenna connection to the regulator circuit whereby the output drive signal amplitude is controlled to preclude the existence of significantly excessive voltage at the antenna connection.

\* \* \* \* \*