



US006472954B1

(12) **United States Patent**
Ruby et al.

(10) **Patent No.:** **US 6,472,954 B1**
(45) **Date of Patent:** **Oct. 29, 2002**

(54) **CONTROLLED EFFECTIVE COUPLING COEFFICIENTS FOR FILM BULK ACOUSTIC RESONATORS**

(75) Inventors: **Richard C. Ruby**, Menlo Park, CA (US); **Paul Bradley**, Mountain View, CA (US); **Domingo Figueredo**, Livermore, CA (US); **John D. Larson, III**, Palo Alto, CA (US); **Yury Oshmyansky**, Camarillo, CA (US)

(73) Assignee: **Agilent Technologies, Inc.**, Palo Alto, CA (US)

(*) Notice: Subject to any disclaimer, the term of this patent is extended or adjusted under 35 U.S.C. 154(b) by 0 days.

(21) Appl. No.: **09/841,234**

(22) Filed: **Apr. 23, 2001**

(51) **Int. Cl.**⁷ **H03H 9/205**; H03H 9/70; H03H 9/54

(52) **U.S. Cl.** **333/133**; 333/188; 29/25.35; 310/312; 310/364

(58) **Field of Search** 333/133, 189–192; 29/25.35; 310/312, 349, 363, 364

(56) **References Cited**

U.S. PATENT DOCUMENTS

5,654,680 A	*	8/1997	Kwan et al.	333/195
5,910,756 A	*	6/1999	Ella	333/133
6,262,637 B1	*	7/2001	Bradley et al.	333/133
6,291,931 B1	*	9/2001	Lakin	310/364

OTHER PUBLICATIONS

P. Osbond et al.; “The Influence of ZnO and Electrode Thickness on The Performance of Thin Film Bulk Acoustic

Wave Resonators”, *1999 IEEE Ultrasonics Symposium Proceedings*, vol. 2, pp. 911–914, Oct. 1999.*

K.M. Lakin et al.; “Development of Miniature Filters For Wireless Applications”, *IEEE Trans. Microwave Theory and Techniques*; vol. 43, issue 12, part 2, pp. 2933–2939, Dec. 1995.*

Ruby, Richard C., et al., PCS 1900MHz duplexer using thin film bulk acoustic resonators (FBARs), *Electronics Letters*, vol. 35, No. 10, May 13, 1999, pp. 794–795.

* cited by examiner

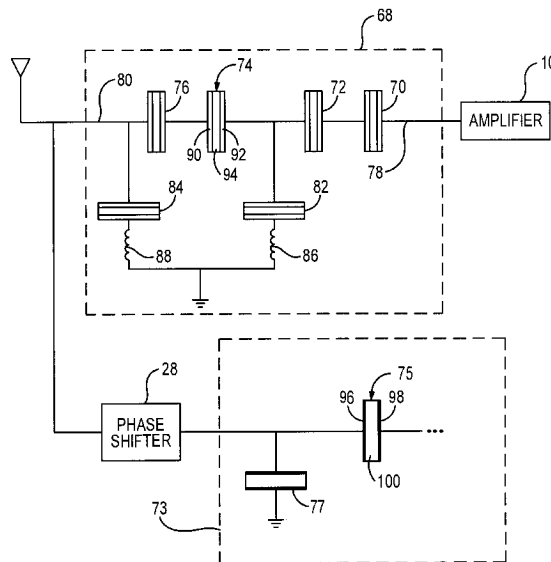
Primary Examiner—Benny Lee

Assistant Examiner—Barbara Summons

(57) **ABSTRACT**

In an array of acoustic resonators, the effective coupling coefficient of first and second filters are individually tailored in order to achieve desired frequency responses. In a duplexer embodiment, the effective coupling coefficient of a transmit band-pass filter is lower than the effective coupling coefficient of a receive band-pass filter of the same duplexer. In one embodiment, the tailoring of the coefficients is achieved by varying the ratio of the thickness of a piezoelectric layer to the total thickness of electrode layers. For example, the total thickness of the electrode layers of the transmit filter may be in the range of 1.2 to 2.8 times the total thickness of the electrode layers of the receive filter. In another embodiment, the coefficient tailoring is achieved by forming a capacitor in parallel with an acoustic resonator within the filter for which the effective coupling coefficient is to be degraded. Preferably, the capacitor is formed of the same materials used to fabricate a film bulk acoustic resonator (FBAR). The capacitor may be mass loaded to change its frequency by depositing a metal layer on the capacitor. Alternatively, the mass loading may be provided by forming the capacitor directly on a substrate.

10 Claims, 8 Drawing Sheets



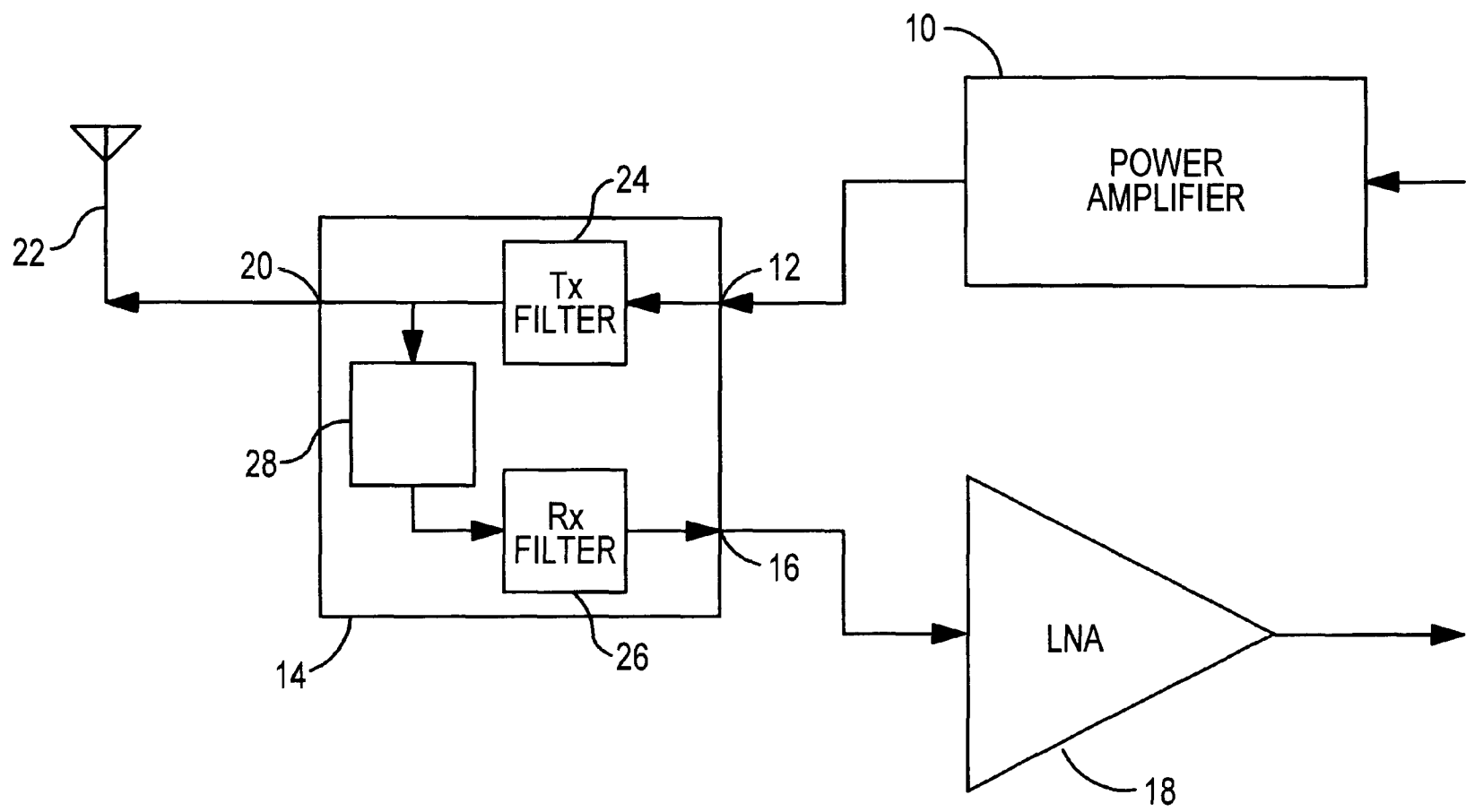


FIG. 1
(PRIOR ART)

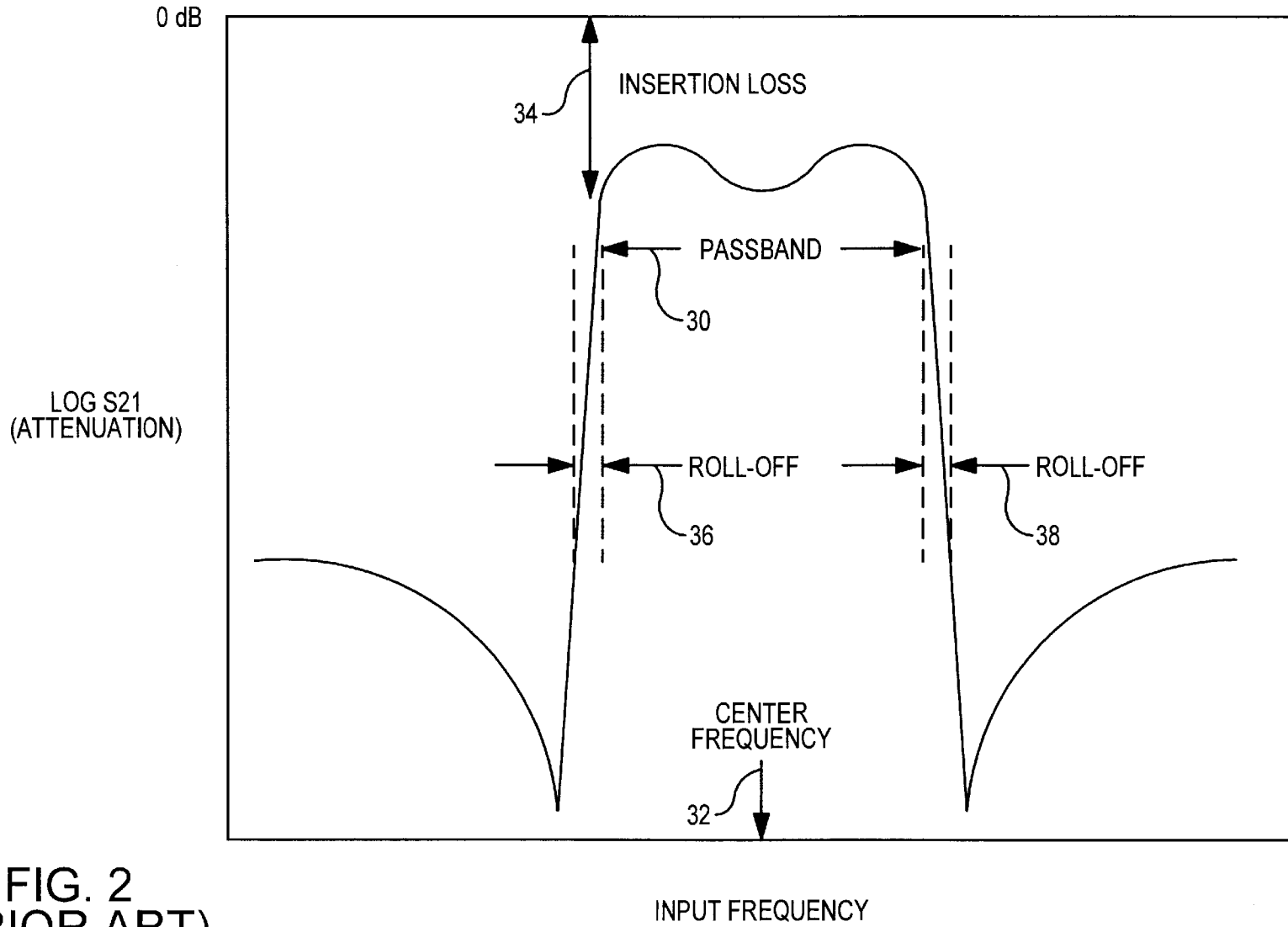


FIG. 2
(PRIOR ART)

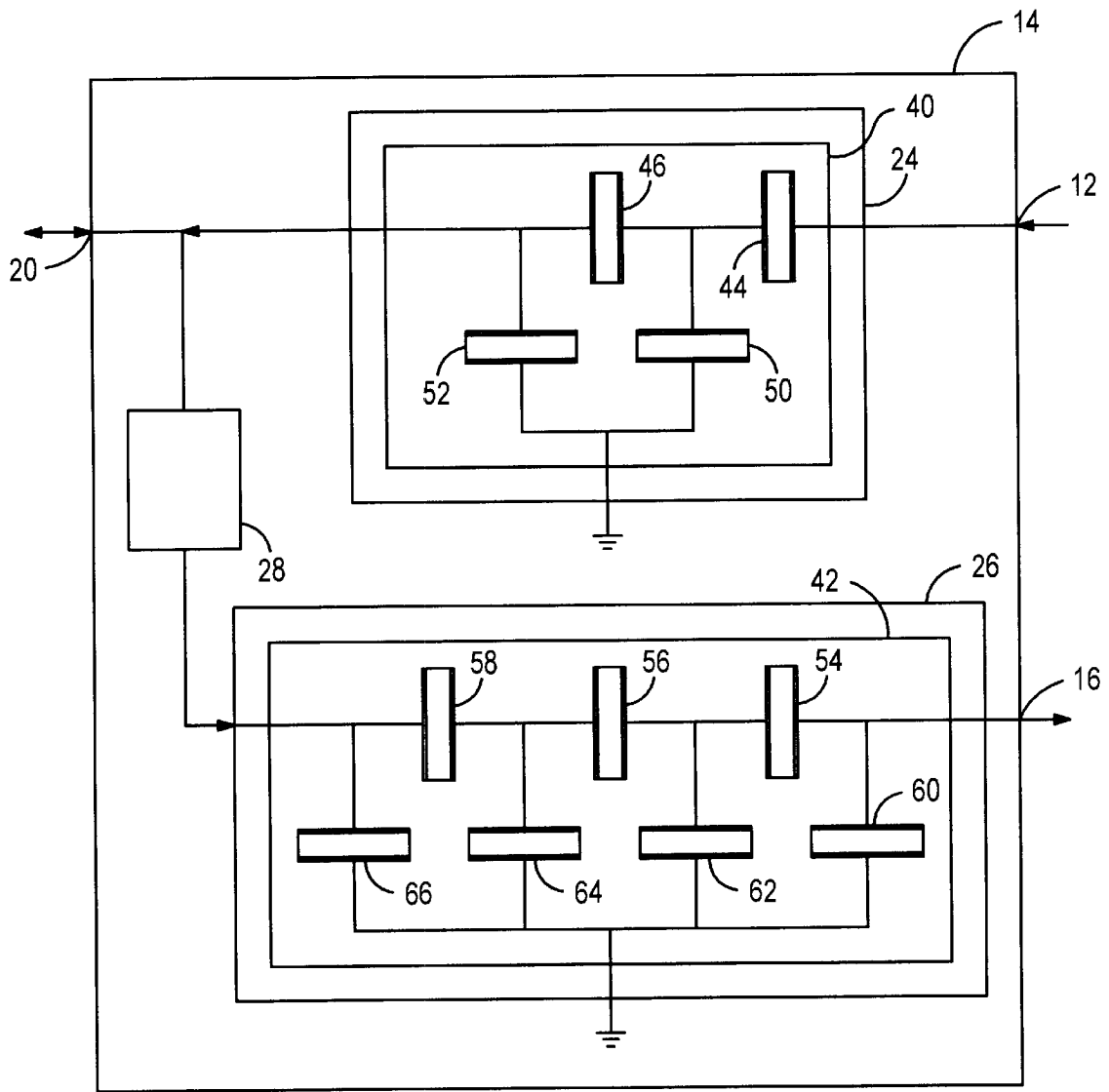


FIG. 3
(PRIOR ART)

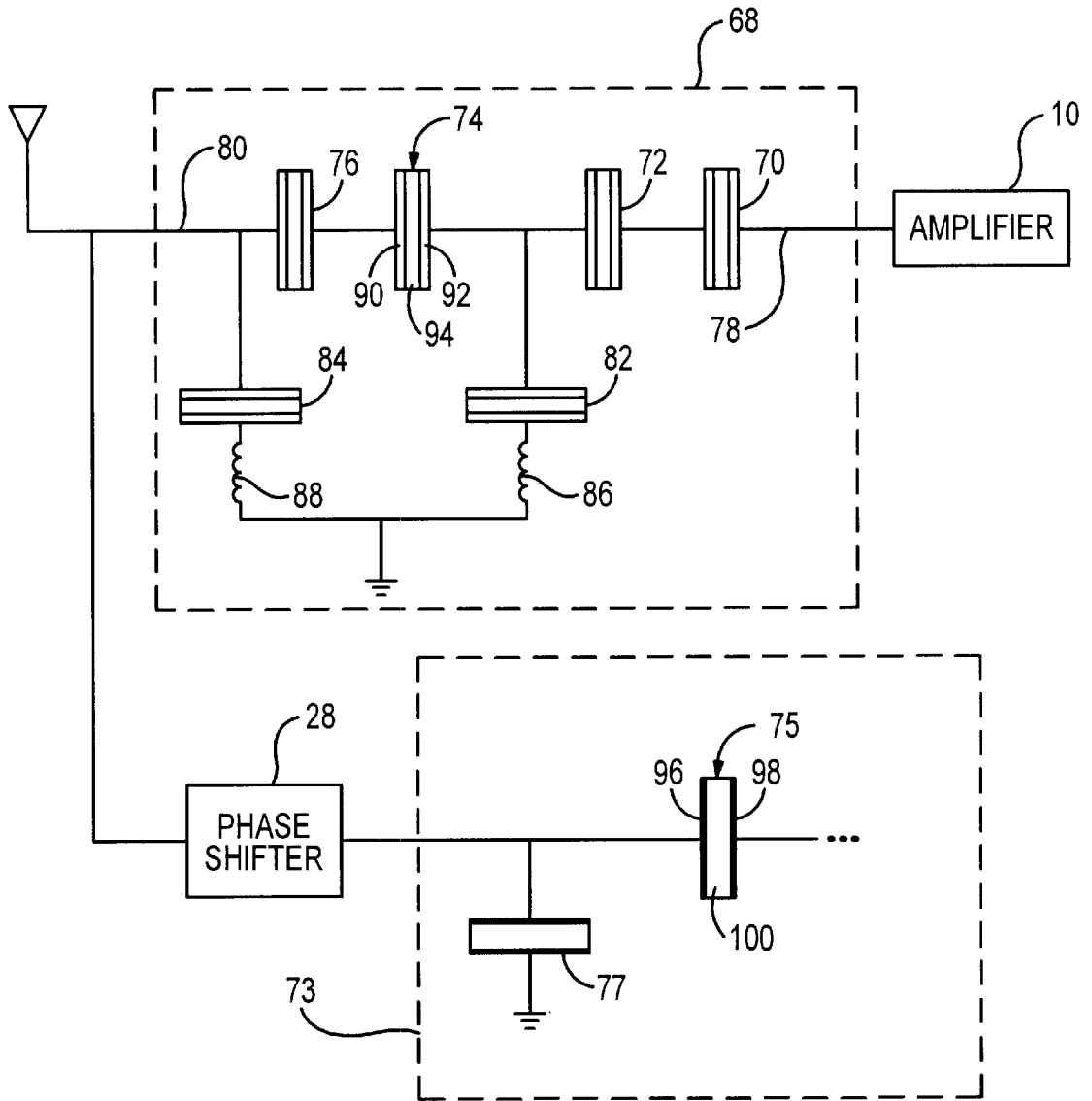


FIG. 4

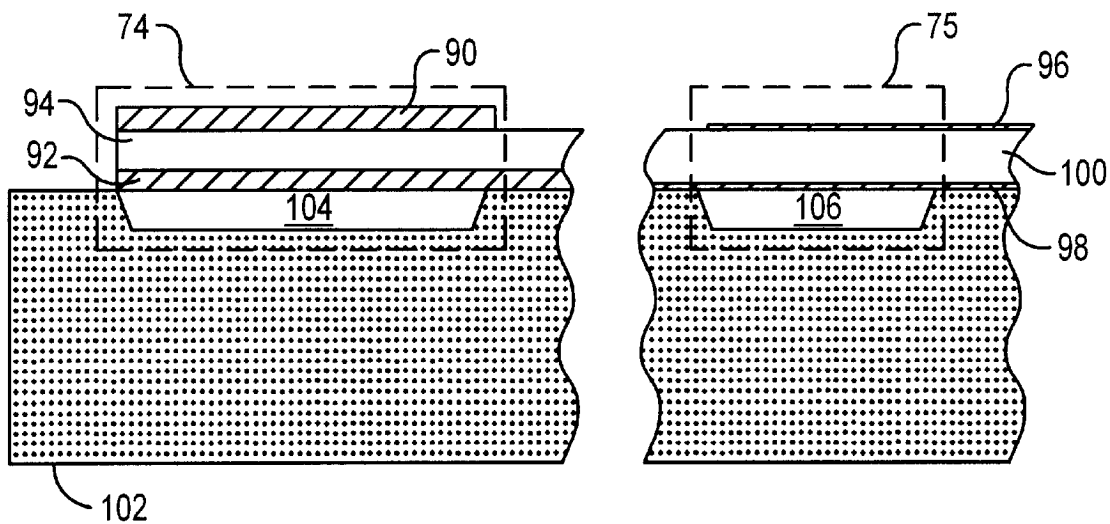


FIG. 5

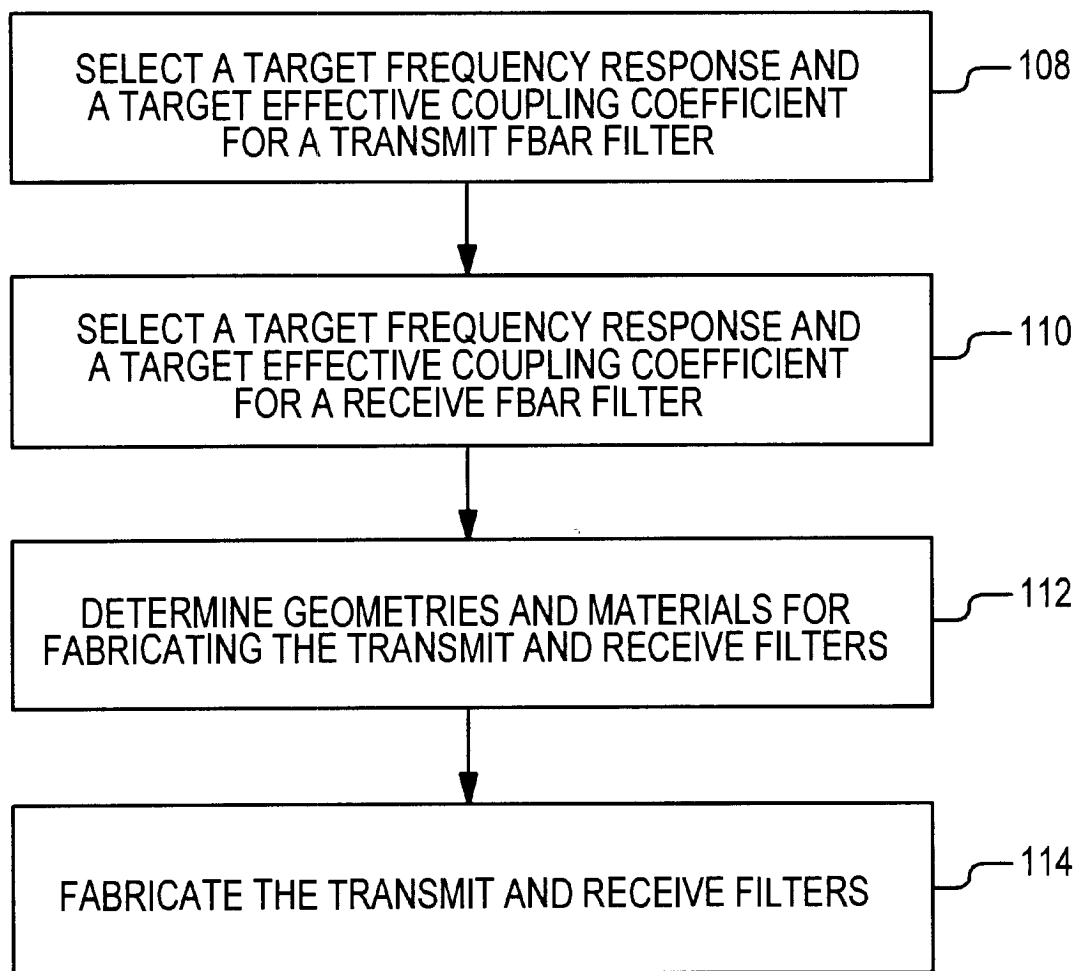


FIG. 6

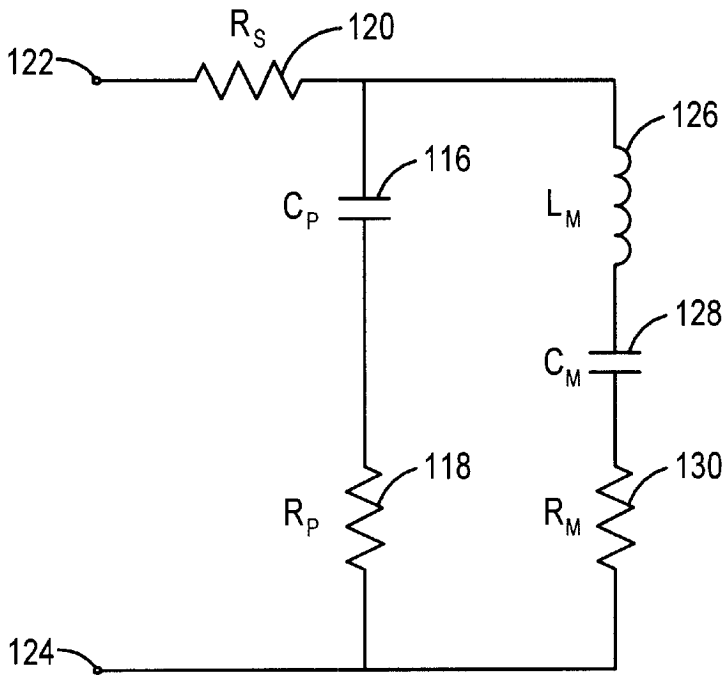


FIG. 7

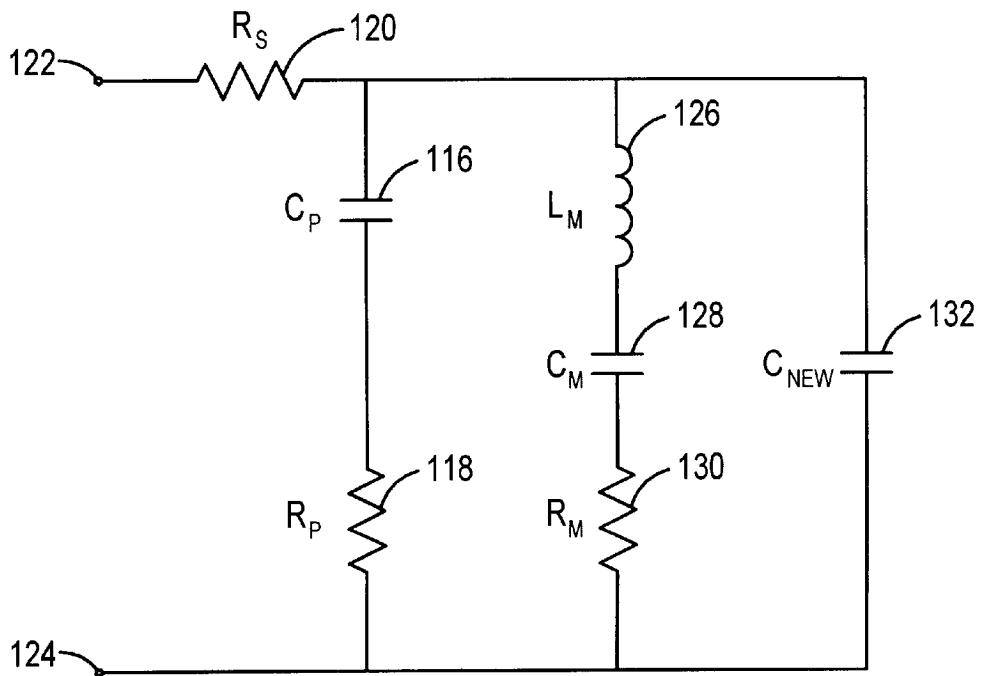


FIG. 8

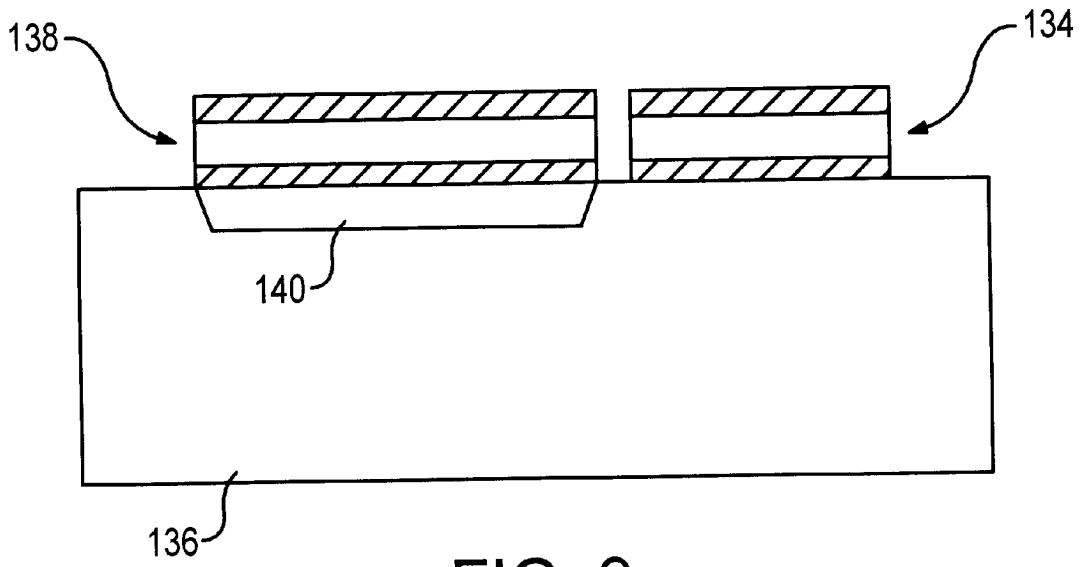


FIG. 9

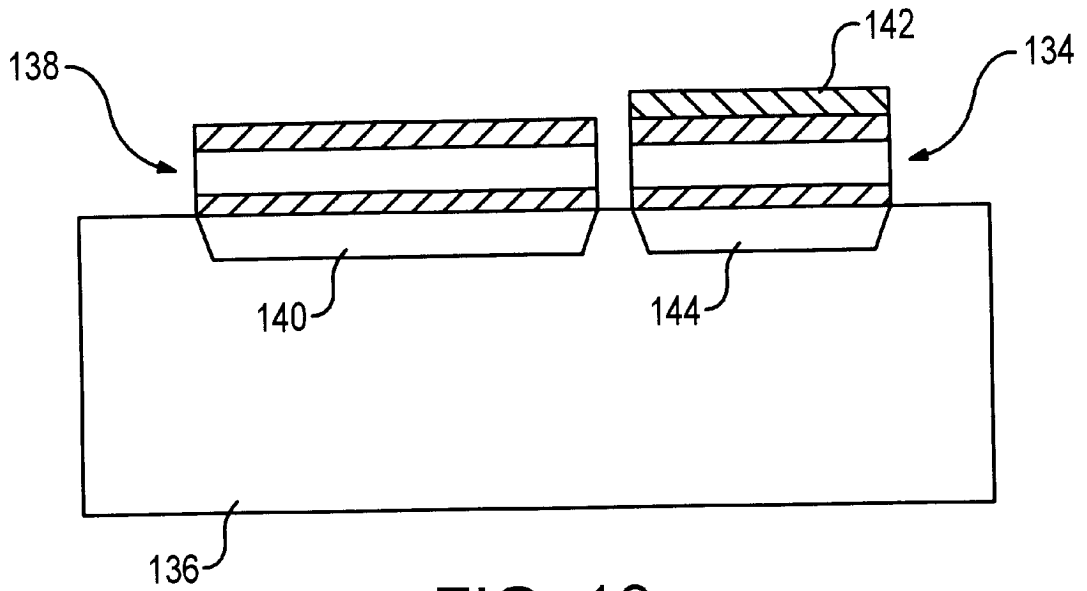


FIG. 10

CONTROLLED EFFECTIVE COUPLING COEFFICIENTS FOR FILM BULK ACOUSTIC RESONATORS

TECHNICAL FIELD

The invention relates generally to acoustic resonators and more particularly to controlling the effective coupling coefficient of a film bulk acoustic resonator.

BACKGROUND ART

In many different communications applications, a common signal path is coupled to both an input of a receiver and an output of a transmitter. For example, in a cellular or cordless telephone, an antenna may be coupled to the receiver and the transmitter. In such an arrangement, a duplexer is often used to couple the common signal path to the input and the output. The function of the duplexer is to provide the necessary coupling to and from the common signal path, while preventing the signals generated by the transmitter from being coupled to the input of the receiver.

One type of duplexer is referred to as the half duplexer. A half duplexer uses a switch to connect the common signal path to the receiver or the transmitter on a time division basis. The half duplexer has the desired coupling and attenuation properties, but is unacceptable in many telephony applications, since it does not allow parties of a call to speak and be heard simultaneously.

A type of duplexer that is more acceptable for telephony applications is the full duplexer. A full duplexer operates only if the transmit signal has a frequency that is different than the frequency of the receive signal. The full duplexer incorporates band-pass filters that isolate the transmit signal from the receive signal according to the frequencies. FIG. 1 illustrates a conventional circuit used in cellular telephones, personal communication system (PCS) devices and other transmit/receive devices. A power amplifier **10** of a transmitter is connected to a transmit port **12** of a full duplexer **14**. The duplexer also includes a receive port **16** that is connected to a low noise amplifier (LNA) **18** of a receiver. In addition to the transmit port and the receive port, the duplexer **14** includes an antenna port **20**, which is connected to an antenna **22**.

The duplexer **14** is a three-port device having the transmit port **12**, the receive port **16** and the antenna port **20**. Internally, the duplexer includes a transmit band-pass filter **24**, a receiver band-pass filter **26** and a phase shifter **28**. The passbands of the two filters **24** and **26** are respectively centered on the frequency range of the transmit signal that is input via the power amplifier **10** and the receive signal to which the receiver is tuned.

The requirements for the band-pass filters **24** and **26** of the duplexer **14** are stringent. The band-pass filters must isolate low intensity receive signals generated at the antenna **22** and directed to the input of the low noise amplifier **18** from the strong transmit signals generated by the power amplifier **10**. In a typical embodiment, the sensitivity of the low noise amplifier may be in the order of -100 dBm, while the power amplifier may provide transmit signals having an intensity of approximately 28 dBm. It is expected that the duplexer **14** must attenuate the transmit signal by approximately 50 dB between the antenna port **20** and the receive port **16** to prevent any residual transmit signal mixed with the receive signal at the receive port from overloading the low noise amplifier.

One type of PCS that is used in a mobile telephone employs code division multiple access (CDMA). The

CDMA PCS wireless bands are centered at approximately 1920 MHz and have an especially stringent regulatory requirement for duplexer performance. Some concerns will be identified with reference to FIG. 2. A passband **30** is defined by several poles and several zeros. The poles and zeros are equidistantly spaced from a center frequency **32**. For the transmitter passband **30**, the transmitter-to-antenna insertion loss **34** is preferably better than -3 dB over most of the band. The isolation from the transmitter to receiver ports exceeds 50 dB across most of the transmitter band and 46 dB in the receiver band. The crossover between the transmitter and receiver bands occurs around 1920 MHz. The transmitter and receiver bands are approximately 3.0 percent of the carrier frequency, so that extremely sharp filter roll-off **36** and **38** is required. As will be explained more fully below, the lower-frequency poles and zeroes and the roll-off **36** are determined by the characteristics of shunt resonators, while the higher-frequency poles and zeroes and the roll-off **38** are determined by the characteristics of series resonators.

Another challenge for the duplexer is achieving power handling requirements. The power amplifier **10** of FIG. 1 in the transmitter can deliver 1 Watt of power to the transmit port **12** of the duplexer **14**. The band-pass filter **24** must be capable of handling such power without being destroyed and without its performance being degraded.

The duplexer **14** will be described in greater detail with reference to FIG. 3. The duplexer includes a transmit film bulk acoustic resonator (FBAR) array **40** and a receive FBAR array **42**. The transmit FBAR array is a two-stage ladder circuit having two series FBARs **44** and **46** and two shunt FBARs **50** and **52**. The series FBARs are connected in series between the transmit port **12** and the antenna port **20**, while the shunt FBARs are connected between electrical ground and nodes between the series FBARs. Each full stage of an FBAR array is composed of one series FBAR and one shunt FBAR. In order to handle the high power generated by the power amplifier at the filter input of the transmit filter, power bars are used for each of the series elements **44** and **46**.

The receive FBAR array is a $3\frac{1}{2}$ -stage ladder circuit. A half stage is limited to either one series FBAR or one shunt FBAR. In the exemplary array **42**, the half stage is a shunt FBAR **60**. The FBAR array includes three series FBARs **54**, **56** and **58** and four shunt FBARs **60**, **62**, **64** and **66**. The series FBARs are connected in series between the ninety degree phase shifter **28** and the receive port **16**. The shunt FBARs are connected between electrical ground and nodes between the series FBARs.

Circuits suitable for use as the ninety degree phase shifter **28** are known in the art. As examples, the phase shifter may be composed of inductors and capacitors or may be a $\lambda/4$ transmission line.

Within the transmit FBAR array **40**, each series FBAR **44** and **46** may have the same resonant frequency (f_r^{Tx}), which may be centered at 1880 MHz. Similarly, the shunt FBARs **50** and **52** may have the same resonant frequency, but the resonant frequency of the series FBARs is approximately 1.0 percent to 3.0 percent (typically 1.6 percent) greater than that of the shunt FBARs. As a result, the poles that were described with reference to FIG. 2 are provided.

The receive FBAR array **42** of the receive band-pass filter **26** may also be composed of series FBARs **54**, **56** and **58** having the same f_r^{Rx} and shunt FBARs **60**, **62**, **64** and **66** having the same resonant frequency that is 3.0 percent different than the resonant frequency f_r^{Rx} of the series FBARs. Here, f_r^{Rx} is centered at 1960 MHz.

Other considerations that affect the shape of the response shown in FIG. 2 are the figure of merit, which is referred to as Q, and the effective coupling coefficient, which is also referred to as kt^2 . The effective coupling coefficient may be considered as being the ratio of electrical energy to acoustic energy in the operation of a particular FBAR. It has been the goal to maximize both Q and the effective coupling coefficient. As a result of the fabrication process, the effective coupling coefficient can be as high as 8.0 percent. It has been experimentally determined that Q is dependent upon kt^2 and, in some cases, that it is better to decrease kt^2 in order to significantly increase Q. The Q determines the roll-off of the response.

What is needed is a fabrication method and a resulting duplexer which provide a very steep roll-off in the operation of an array of acoustic resonators.

SUMMARY OF THE INVENTION

The performance of arrays of acoustic resonators is enhanced by tailoring the effective coupling coefficients of the individual acoustic resonators on the basis of the functions of the resonators. In a duplexer embodiment, the effective coupling coefficients of FBARs in a transmit band-pass filter are fabricated to have a lower effective coupling coefficient than the FBARs of the receive band-pass filter of the same duplexer.

In one embodiment, the difference in the effective coupling coefficients is achieved by varying the thicknesses of the electrode layers. For a given frequency, the effective coupling coefficient of an acoustic resonator is modified by varying the ratio of the thickness of the piezoelectric layer to the total thickness of the electrode layers. Typically, a goal in the fabrication of FBARs is to minimize the thickness of the electrode layers, thereby providing an "intrinsic" effective coupling coefficient. For example, this intrinsic coefficient may be in the range of 7.0 percent to 8.0 percent. However, the coupling coefficient of an FBAR filter having a given resonant frequency can be adjusted downwardly by decreasing the ratio of the thickness of the piezoelectric layer to the total thickness of the electrode layers, since the resonant frequency is dependent upon the "weighted thickness" (i.e., the physical thickness weighted on the basis of the selection of electrode and piezoelectric materials) of the electrode-piezoelectric stack. As one example of a transmit filter, the thickness of molybdenum (Mo) electrodes can be increased and the thickness of aluminum nitride (AlN) can be reduced in order to achieve a degraded effective coupling coefficient in the range of 2.5 percent to 4.0 percent, while maintaining a targeted resonant frequency. Similarly, a receive filter can be fabricated to have an effective coupling coefficient in the range of 4.0 percent to 6.0 percent by selecting the appropriate thicknesses for the layers that form the FBARs of the receive filter.

The method of fabricating an array of acoustic resonators in accordance with this embodiment includes a step of selecting a first target frequency range and a first target effective coupling coefficient for operation of an FBAR transmit (Tx) filter, and includes selecting a second target frequency and a second target coupling coefficient for operation of an FBAR receiver (Rx) filter. The thicknesses and materials of the piezoelectric and electrode layers for forming the two FBAR filters are determined on the basis of achieving the target resonant frequencies and the target effective coupling coefficients. The determinations include selecting an increased electrode layer thickness for at least one electrode of the Tx FBARs, so that the Tx FBAR filter

will have the degraded coefficient. The two filters are then formed according to the selected thicknesses and materials.

In the fabrication of the two filters, the electrode material may be Mo and the piezoelectric material may be AlN. Using these materials, the electrode layers of the FBAR Tx filter having the degraded coupling coefficient will have a thickness that can be in the range of 1.2 to 2.8 times the thickness of the electrode layers of the Rx filter with the higher coefficient. For example, in a communications device that is compatible with the CDMA PCS standard, the Rx filter may have electrode layer thicknesses of 2200 Å and a piezoelectric thickness of 2.2 microns in order to achieve a coupling coefficient in the range of 5.6 percent to 5.8 percent, while the Tx filter may have electrode layer thicknesses of 4500 Å and a piezoelectric thickness of roughly 8000 Å in order to achieve a coupling coefficient in the range of 3.1 percent to 3.2 percent. The Q (and therefore the steepness of the roll-off) is almost two times higher for the Tx filter than for the Rx filter.

In one application, a desired filter arrangement of FBARs is designed to include at least one "power bar" in order to increase the power handling capacity along a path of the filter arrangement. A "power bar" is defined herein as a pair of large area FBARs which are connected in series in place of a single target FBAR. Each large area FBAR occupies an area that is twice the area of the target FBAR. The parallel-series combination defined by the power bar (in the series connection of conventional electrical equivalent circuits) allows the impedance of the power bar to remain at the target impedance of the target FBAR, but reduces the power density by a factor of four.

In a second embodiment of the invention, the degraded effective coupling coefficient is achieved by forming a capacitor in parallel with at least some of the resonators of the Tx filter. Preferably, the capacitor is formed using materials that are deposited in steps for fabricating the array of acoustic resonators. For example, the electrodes and the piezoelectric layer that are deposited to fabricate the FBARs may be utilized in the formation of a capacitor that is placed in parallel with at least one FBAR of the Tx filter to degrade the effective coupling coefficient. However, the concern in using these layers is that a resonator will be fabricated, rather than a capacitor. One method for ensuring that the additional component functions as a capacitor is to fabricate the electrode-piezoelectric stack of the component directly on the substrate, rather than suspending the stack. In this manner, the substrate provides the means for mass loading the capacitor, thereby pulling the frequency off center.

A second method is to use the gold layer, which is conventionally used to provide contact pads, as the means to pull the resonator component off frequency. This second method is preferred, since the first method may form a high loss capacitor, while the second method is the one that will form a high Q component. By utilizing the gold layer and by suspending the capacitor component as a free-standing membrane in the same manner as the FBARs, the capacitor functions as a high Q resonator, but at a much lower frequency than the first and second FBARs. An advantage is that the frequency of the capacitor can be "tuned" to not only be displaced from the frequency of interest, but to form a parasitic resonance at frequencies where the duplexer does not perform well. As one example, the capacitor may resonate at 1510 MHz, which is a frequency at which existing duplexers do not perform well in the rejection of energy. Tuning the capacitor to 1510 MHz allows a designer to incorporate specific shunt and series type resonators that reduce leakage of the 1510 MHz signal. This is achieved

without any additional process steps to the FBAR fabrication. The tuning of the capacitor can be provided merely by properly selecting the thickness of the gold and other layers in the electrode-piezoelectric stack of the capacitor.

An advantage of the methods described above is that the performance of an array of acoustic resonators is enhanced without significantly affecting the fabrication process. By tailoring the effective coupling coefficients of individual resonators within a full duplexer, roll-off at the opposite edges of the passband can be tailored.

BRIEF DESCRIPTION OF THE DRAWINGS

FIG. 1 a block diagram of a front-end circuit of a conventional cellular telephone or similar device.

FIG. 2 a graph showing the characteristics of a band-pass filter of the type used in FIG. 1.

FIG. 3 is a schematic block diagram of a conventional full duplexer.

FIG. 4 is a schematic block diagram of an example of a pair of passband filters in which the filters have significantly different effective coupling coefficients in accordance with one embodiment of the invention.

FIG. 5 is a cross sectional view of the selected FBARs of FIG. 4.

FIG. 6 is a process flow of steps for carrying out the invention described with reference to FIGS. 4 and 5.

FIG. 7 is a schematic diagram of the conventional electrical equivalent circuit of the FBAR formed in accordance with the first embodiment of the invention.

FIG. 8 is a schematic diagram of the electrical equivalent circuit of an FBAR formed in accordance with a second embodiment of the invention.

FIG. 9 is a side sectional view of a resonator-capacitor pair, with the capacitor being formed directly on the substrate in accordance with the first approach to the second embodiment represented in FIG. 8.

FIG. 10 is a side sectional view of a resonator-capacitor pair, with the capacitor being mass loaded by addition of a top metal layer in accordance with the second approach to achieving the second embodiment represented in FIG. 8.

DETAILED DESCRIPTION

With reference to FIG. 4, a transmit band-pass filter 68 is shown schematically as including four series FBARs 70, 72, 74 and 76 connected in electrical series from a transmit port 78 to an antenna port 80. The filter also includes two shunt FBARs 82 and 84. The first shunt FBAR 82 is connected between the two pairs of series FBARs, while the second shunt FBAR 84 is connected between the antenna port and the series FBAR 76. FIG. 4 also shows one stage of a receive filter 73. This stage includes a series FBAR 75 and a shunt FBAR 77. The number of stages in a transmit (Tx) filter or a receive (Rx) filter is not critical to the invention that will be described more fully below. The significance of the filters is that at least one FBAR will have an effective coupling coefficient that is intentionally degraded relative to at least one other FBAR. In the preferred embodiment, the FBARs of the Tx filter have effective coupling coefficients that are intentionally degraded, while the FBARs of the Rx filter have significantly higher coefficients.

The FBAR pair 70 and 72 and the FBAR pair 74 and 76 are "power bars." The series connection of the two FBARs in each pair increases the power density by a factor of four relative to a single target FBAR. Regarding the first pair of

FBARs 70 and 72, each FBAR is fabricated to occupy an area that is twice the area of the target FBAR. When the two FBARs are connected in series, the series-parallel arrangement of resistances and capacitances in the resulting series combination of the conventional electrical equivalent circuits (which will be described below with reference to FIG. 7) will achieve the impedance of the target FBAR, but with the increased power density. The resonant frequencies of the FBARs in a power bar should be the same as the resonant frequency of the target FBAR which is "replaced" by the power bar.

The phase shifter 28 of FIG. 4 is not critical to the invention and is consistent with the description of the phase shifter 28 of FIG. 1. As two examples, the phase shifter may be comprised of inductors and capacitors or may be a one-quarter wavelength transmission line. Each of the shunt FBARs 82 and 84 is coupled to ground through an external inductor 86 and 88. The inductors may be used to position the attenuation poles of the shunt bars, so that the passband response exhibits the desired characteristics, such as steep roll-off at the outside edges of the response.

Each of the FBARs 70, 72, 74, 75, 76 and 77 includes outside electrode layers and an interior piezoelectric layer. For example, the series FBAR 74 of the Tx filter 68 includes electrodes 90 and 92 that sandwich a piezoelectric layer 94. Similarly, the series FBAR 75 of the Rx filter 73 includes electrodes 96 and 98 and a center piezoelectric layer 100. The ratio of the thickness of the piezoelectric layer 94 to the total thickness of the electrode layers that sandwich the piezoelectric layer is represented as being much less for the series FBARs of the Tx filter than for the series FBAR of the Rx filter. As will be explained more fully below, the increased electrode layer thickness degrades the coupling coefficient of the Tx filter 68 relative to the Rx filter 73. As a result, the Q of the Tx filter is greater than the Q of the Rx filter and the steepness at the edges of the passband response of the Tx filter is greater than that of the Rx filter.

FIG. 5 illustrates a side sectional view of the series FBAR 74 of the Tx filter and the series FBAR 75 of the Rx filter. Again, the electrode layers 90 and 92 of the FBAR 74 are shown as being significantly thicker than the electrode layers 96 and 98 of the FBAR 75. Both of the filters 68 and 73 are formed on a single substrate 102, such as a silicon substrate. However, the filters may be formed on separate substrates or may be formed on a material other than silicon. An FBAR is formed where the piezoelectric material 94 and 100 is sandwiched between two electrodes 90, 92, 96 and 98. Preferably, wells 104 and 106 are etched into the substrate below the FBARs. As a result, each electrode-piezoelectric stack that forms an FBAR is a membrane suspended over a well, so as to provide resonator-to-air interfaces at both sides. Alternatively, solidly mounted resonators (SMRs) may be used without diverging from the invention. SMRs typically include acoustic Bragg reflectors at their bottom surfaces in order to provide a large acoustic impedance. A Bragg reflector is made of layers of alternating high and low acoustic impedance materials, with each layer having a thickness of approximately one-quarter wavelength of the resonant frequency of the FBAR. In some applications, a number of FBARs share a single well.

The characteristics of the individual series FBARs 74 and 75 of FIGS. 4 and 5 depend upon the layer thicknesses and the materials of the electrode-piezoelectric stacks. The preferred material for forming the piezoelectric layers 94 and 100 is AIN, but other materials may be utilized (e.g., zinc oxide). An acceptable electrode material is Mo, but other metals may be substituted (e.g., aluminum, tungsten, gold or

titanium). For given electrode and piezoelectric materials, characteristics of an FBAR are dependent upon geometrical factors such as the thickness of the piezoelectric layer, the thicknesses of the electrodes and the area of overlap between the electrodes. For example, the resonant frequency is dependent upon the “weighted thickness” of the electrode-piezoelectric stack. The weighted thickness is the physical thickness with an adjustment that is based upon the selection of the electrode and piezoelectric materials. The adjustment is necessary, since the velocity of sound is different in different materials. Changing the weighted thickness of one or both of the electrodes changes the weighted thickness of the electrode-piezoelectric stack, thereby adjusting the resonant frequency of the stack.

The layer thicknesses of the electrode-piezoelectric stacks also affect the effective coupling coefficients (kt^2) of the Tx and Rx filters **68** and **73**. In accordance with the invention, the effective coupling coefficients of the filters are tailored on the basis of the functions of the filters. By providing the Tx filter **68** with a lower effective coupling coefficient than the Rx filter **73**, a CDMA-compatible duplexer exhibits desirable characteristics. As noted with reference to FIGS. 1–3, there is a crossover between the transmitter passband and the receiver passband. The series FBARs **70**, **72**, **74** and **76** of the Tx filter significantly influence the characteristics of the transmitter passband at the crossover. Intentionally degrading the effective coupling coefficient while maintaining the specification-required resonant frequency enhances the duplexer performance. As previously noted, the reduction in the kt^2 of a Tx filter increases its Q, so that a steeper roll-off is achieved.

In FIG. 5, the cross sectional view through the Tx FBAR **74** and the Rx FBAR **75** shows the difference in the ratios of the thickness of the piezoelectric layer and the total thicknesses of the electrode layers. For the Tx FBAR **74**, the ratio is significantly less than that of the Rx FBAR **75**. Therefore, the effective coupling coefficient of the Tx filter will be significantly less than the coupling coefficient for the Rx filter. Typically a goal in the fabrication of FBARs is to minimize the thickness of the electrode layers. This provides an intrinsic effective coupling coefficient in the range of 7.0 percent to 8.0 percent. In FIG. 5, the electrode layers **96** and **98** that are used to define the Rx FBAR **75** may be formed of Mo having a thickness of 2200 Å. The portion of the piezoelectric layer **100** that forms the Rx FBAR may be AlN having a thickness of approximately 2.2 microns. This provides the specification-required resonant frequency for the CDMA-compatible transmit filter and provides an effective coupling coefficient in the range of 5.6 percent to 5.8 percent.

The Tx FBAR **74** is formed such that the Tx filter **68** will have the intentionally degraded effective coupling coefficient. The Mo top and bottom electrodes **90** and **92** may have a thickness of approximately 4500 Å, while the thickness of the relevant portion of the piezoelectric layer **94** may be approximately 8000 Å. This provides the specification-required resonant frequency and provides a degraded effective coupling coefficient in the range of 3.1 percent to 3.2 percent.

For Tx and Rx filters **68** and **73** that are formed on the basis of the identified layer thicknesses, the Tx filter may have a Q that is approximately twice that of the Rx filter. Consequently, the steepness at the edges of the Tx filter response will be significantly greater.

Referring now to FIG. 6, the process flow of steps for fabricating coefficient-differentiated FBAR filters in accordance

with the invention will be described. In step **108**, a target frequency response and a target effective coupling coefficient are selected for a first FBAR filter. In the formation of the transmit filter **68** of FIG. 4, the first FBAR filter is the Tx filter **68**. The target frequency response will depend upon the desired application. For example, in a duplexer that is compatible with CDMA requirements, the target frequency response is likely to be centered at 1880 MHz (i.e., $f_r^{Tx}=1880$ MHz).

In step **110**, a target frequency response and a target effective coupling coefficient are selected for a second FBAR filter. Again referring to FIG. 4, the second FBAR filter is the Rx FBAR filter **73**, so that $f_r^{Rx}=960$ MHz. In the preferred embodiment, the first target coupling coefficient is selected to be in the range of 2.5 percent to 4.0 percent, while the second target coupling coefficient is selected to be in the range of 4.0 percent to 6.0 percent.

The layer thicknesses and materials for fabricating the transmit and receive FBAR filters are determined at step **112**. This step includes selecting an increased electrode layer thickness for at least one electrode layer of the Tx FBAR filter **68**, thereby ensuring that the effective coupling coefficient of the Tx FBAR filter is degraded relative to the coupling coefficient of the Rx FBAR filter **73**. This necessitates identifying ratios of the piezoelectric layer thickness to the total thickness of the electrode layers for each of the Tx and Rx FBAR filters. The ratio for the Tx FBAR filter will be less than the identified ratio for the Rx FBAR filter, since the target effective coupling coefficient is reduced for the Tx FBAR filter. For purposes of ease of fabrication, the materials for forming the Tx and Rx FBAR filters are preferably the same. However, this is not critical, since the difference in the coefficients may be partially achieved by selecting different materials for the two filters.

In step **114**, the FBARs are fabricated. The filters **68** and **73** may be formed on the same substrate **102**, such as shown in FIG. 5. However, there are process advantages to forming the filters on separate substrates and subsequently interconnecting the filters. It is difficult to vary the thicknesses of the electrode layers and the piezoelectric layers on a single substrate. Forming the FBARs on separate substrates eliminates the difficulties. If the FBARs are to be formed on the same substrate, portions of increased layer thickness may be achieved by providing multiple deposition steps. For example, in the formation of the lower electrode layer **92** of FIG. 5, the Mo deposition may be temporarily terminated after the layer has reached its desired thickness for the electrode layer **98**. A masking layer may then be deposited in the area of the FBAR **75**, so that the re-initiating of the deposition of Mo will occur only in the area of the series FBAR **74**. A similar multi-step deposition process may be provided for the piezoelectric layer **100**. The two top electrodes **90** and **96** may be similarly formed.

While the first embodiment of the invention has been described as being used in FBARs having a single piezoelectric layer, the invention may be extended to stacked FBARs without diverging from the level of skill in the art. That is, arrays of FBARs having stacked piezoelectric layers that are separated by electrode layers may be fabricated to have tailored effective coupling coefficients, so as to achieve desired filter characteristics.

The process of modifying the ratio of the thickness of the piezoelectric layer to the total thickness of the electrode layers is one means for tailoring the effective coupling coefficients of different FBARs in an FBAR array. A second means of tailoring the effective coupling coefficient is to

form capacitors in parallel with selected FBARs. As will be explained more fully below, the parallel connection of a capacitor will degrade the effective coupling coefficient. This use of a capacitor to degrade the effective coupling coefficient may be used in applications other than the design and fabrication of Tx and Rx filters.

FIG. 7 is an electrical equivalent circuit for an FBAR. The circuit is known in the art as the modified Butterworth-Van Dyke circuit. The main reactive component is the shunt capacitance (C_p) 116, which is the capacitance defined by the structure of the electrodes and the piezoelectric layer. The piezoelectric layer functions as the dielectric for the shunt capacitance 116. The plate resistance (R_p) 118 represents the series resistance of the shunt capacitance 116, while the resistance (R_s) 120 represents the series electrical resistance of the connections between the contacts 122 and 124 of the electrode-piezoelectric stack. Conventionally, the contacts 122 and 124 are formed of gold.

The series connections of the inductance (L_M) 126, capacitance (C_M) 128 and resistance (R_M) 130 are the motional representations of the resonance due to the piezoelectric properties of the FBAR. In the operation of an FBAR filter having FBARs that are fabricated using the steps described with reference to FIGS. 5 and 6, the effective coupling coefficient is directly related to the ratio of the motional capacitance 128 to the plate capacitance 116. However, by adding a capacitance (C_{NEW}) 132 as shown in FIG. 8, the plate capacitance 116 is increased while the motional capacitance 128 remains constant. By placing the capacitance 132 in parallel with each targeted FBAR, the effective coupling coefficient of the FBAR filter is controllably reduced. It should be noted that by adding another resonator of the same frequency in parallel with the FBAR, both of the capacitances 116 and 128 of FIG. 7 are increased, so that the ratio will be unaffected. Clearly, a capacitor rather than a resonator provides the desired effects.

Preferably, the added capacitance 132 is fabricated using the same materials and techniques as used in the fabrication of the FBAR. The concern with forming a capacitor using the top and bottom electrode layers as plates and the piezoelectric layer as a dielectric is that a resonator will be formed, rather than a capacitor. Thus, the new device should be mass loaded such that it does not resonate at one of the frequencies of interest. Referring to FIG. 9, one technique for mass loading the new device is to fabricate the capacitor stack 134 directly on the surface of the substrate 136. This pulls the resonant frequency off of the center. That is, although the layers of the capacitor stack 134 have the same thicknesses as the layers of the affected FBAR 138, the frequencies will be different because the capacitor stack is formed directly on the surface of the substrate 136, while the FBAR is suspended over the substrate by the formation of a well 140. In order to properly distinguish the capacitor stack 134 from the FBAR stack 138, the connections that provide the electrical parallel arrangement are not shown.

The technique of forming the capacitor stack 134 directly on the surface of the substrate 136 allows the tailoring of the coupling coefficient of the affected FBAR filter, as described with reference to FIG. 8. The concern with this approach is that the capacitor stack may act as a transducer which broadcasts energy into the substrate 136. Since the substrate is relatively thick, a multitude of frequencies can be transmitted. Thus, the new device may be undesirably loopy.

Referring now to FIG. 10, another approach to forming the capacitance 132 of FIG. 8 is to apply a gold layer 142 to the top of the capacitor stack that is formed over a well 144.

The components of FIG. 10 that are identical to those of FIG. 9 are provided with identical reference numerals. Thus, the only differences between the approaches of FIGS. 9 and 10 are the added gold layer 142 and the added well 144. Preferably, the gold layer is the same layer that is conventionally used to form the contact pads for the array of FBARs. The addition of the gold layer reduces the resonant frequency of the stack 134, since it increases the weighted thickness of the top electrode. An advantage to the use of the gold from the pad layer metal level is that the frequency can be "tuned" so that it is not only off of the frequency of interest, but that it forms a parasitic resonance at frequencies where the duplexer does not perform well. As one example, the capacitor may resonate at 1510 MHz, which is a frequency at which existing duplexers do not perform well in the rejection of energy. Tuning the capacitor stack 134 to 1510 MHz allows a designer to incorporate specific shunt resonators and series resonators that reduce leakage of the 1510 MHz signal. This is achieved without adding process steps to the FBAR fabrication. The tuning of the capacitor stack can be achieved merely by properly selecting the thicknesses of the gold and other layers in the stack.

What is claimed is:

1. A method of fabricating an array of acoustic resonators comprising the steps of:

selecting a first target frequency response and a first target effective coupling coefficient for operation of a first film bulk acoustic resonator (FBAR) filter;

selecting a second target frequency response and a second target effective coupling coefficient for operation of a second FBAR filter, said first target effective coupling coefficient being substantially degraded relative to said second target effective coupling coefficient;

determining thicknesses and materials of piezoelectric and electrode layers for forming said first and second FBAR filters so as to achieve said first and second target frequency responses and said first and second target effective coupling coefficients, including selecting an increased electrode layer thickness for at least one electrode layer of said first FBAR filter, said increased electrode layer thickness being greater than electrode layer thicknesses selected for said second FBAR filter such that said substantially degraded first target effective coupling coefficient is achieved; and

forming said first and second FBAR filters based on said thicknesses and materials.

2. The method of claim 1 wherein said step of determining said thicknesses and materials includes determining a ratio of a thickness of a piezoelectric layer to a total thickness of electrode layers for each of said first and second FBAR filters, said ratio for said first FBAR filter being less than said ratio for said second FBAR filter.

3. The method of claim 1 wherein said step of selecting said first target coefficient includes selecting a value in the range of 2.5 percent to 4.0 percent and said step of selecting said second target coefficient includes selecting a value in the range of 4.0 percent to 6.0 percent.

4. The method of claim 1 further comprising the step of forming a duplexer to include each of:

said first FBAR filter as a transmit filter; and

said second FBAR filter as a receive filter.

5. The method of claim 1 wherein said step of forming said first and second FBAR filters includes depositing AlN as said piezoelectric layer and depositing Mo as said electrode layers, said electrode layers of said first FBAR filter having a thickness that is in the range of 1.2 to 2.8 times the thickness of electrode layers of said second FBAR filter.

11

6. The method of claim 1 wherein said selecting steps and said step of forming said first and second FBAR filters includes providing a first target frequency response having a center frequency that is within 100 MHz of a center frequency of said second target frequency response.

7. A duplexer comprising:

a transmit film bulk acoustic resonator (FBAR) array having transmit series FBARs connected in series and having transmit shunt FBARS; and

a receive FBAR array having receive series FBARS connected in series and having receive shunt FBARS;

wherein said transmit FBAR array has an effective coupling coefficient that is substantially less than an effective coupling coefficient of said receive FBAR array, said substantially less effective coupling coefficient being realized by providing at least some FBARs of said transmit FBAR array with substantially thicker electrode layers and substantially thinner piezoelectric layers than said FBARS of said receive FBAR array, said at least some FBARS of said transmit FBAR array each having a ratio of thickness of said piezoelectric layer to total thickness of said electrode layers, with said ratio being substantially less than ratios of piezoelectric layer thickness to total electrode layer thickness for said receive series FBARS and said receive shunt FBARS.

12

8. The duplexer of claim 7 wherein said transmit and receive FBAR arrays have frequencies compatible with operation in a code division multiple access (CDMA) personal communication system (PCS).

9. The duplexer of claim 7 wherein said total thickness of said electrode layers of said at least some FBARS is in the range of 1.2 to 2.8 times said total electrode layer thickness for said receive series FBARS and said receive shunt FBARS.

10. A duplexer comprising:

a transmit film bulk acoustic resonator (FBAR) array having transmit series FBARs connected in series and having transmit shunt FBARS; and

a receive FBAR array having receive series FBARS connected in series and having receive shunt FBARS;

wherein said transmit FBAR array has an effective coupling coefficient that is substantially less than an effective coupling coefficient of said receive FBAR array, at least some FBARS of said transmit FBAR array having substantially thicker electrode layers and substantially thinner piezoelectric layers than said FBARS of said receive FBAR array in order to attain said substantially less effective coupling coefficient that is exhibited by said transmit FBAR array.

* * * * *